

## Anti-ICSBP1/IRF8 antibody (C-Term) (STJ70234)

STJ70234

### GENERAL INFORMATION

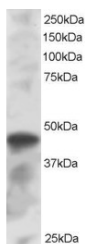
<b>Product Type</b>	Primary antibodies
<b>Short Description</b>	Goat polyclonal antibody anti-ICSBP1/IRF8 (C-Term) is suitable for use in ELISA, Western Blot and Immunohistochemistry research applications.
<b>Applications</b>	Pep-ELISA/WB/IHC
<b>Host/Source</b>	Goat
<b>Reactivity</b>	Human/Mouse/Rat/Cow

### PRODUCT PROPERTIES

<b>Clonality</b>	Polyclonal
<b>Clone ID</b>	
<b>Concentration</b>	0.5 mg/mL
<b>Conjugation</b>	Unconjugated
<b>Purification</b>	Purified from goat serum by ammonium sulphate precipitation followed by antigen affinity chromatography using the immunizing peptide.
<b>Dilution Range</b>	Peptide ELISA: antibody detection limit dilution 1:8000. WB: Approx 45-50kDa band seen in K562 lysate (Predicted MW of 47kDa according to NP_002154.1). Recommended concentration: 0.5-2µg/ml. IHC: Paraffin embedded Human Tonsil. Recommended co
<b>Formulation</b>	0.5 mg/ml in Tris saline, 0.02% sodium azide, pH7.3 with 0.5% bovine serum albumin. NA
<b>Isotype</b>	IgG
<b>Storage Instruction</b>	Store at -20°C on receipt and minimise freeze-thaw cycles.

### TARGET INFORMATION

<b>Gene ID</b>	3394
<b>Gene Symbol</b>	IRF8
<b>Uniprot ID</b>	IRF8_HUMAN
<b>Immunogen</b>	
<b>Immunogen</b>	C-Term
<b>Region</b>	
<b>Specificity</b>	
<b>Immunogen</b>	QRSFFRENQQITV
<b>Sequence</b>	



STJ70234 staining (1Åug/ml) of K562 lysate (RIPA buffer, 30Åug total protein per lane). Primary incubated for 1 hour. Detected by western blot using chemiluminescence.

This product is suitable for in-vitro studies under the RESEARCH USE ONLY [RUO] licence. This product must not be used as for diagnostic or other medical purposes.  
St John's Laboratory Ltd, Knowledge Dock Business Centre, University Way, London, E16 2RD | Tel: 0208 223 3081