

Anti-PRDM16/MEL1 antibody (C-Term) (STJ70230)

STJ70230

GENERAL INFORMATION

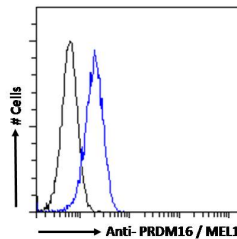
Product Type	Primary antibodies
Short Description	Goat polyclonal antibody anti-PRDM16/MEL1 (C-Term) is suitable for use in ELISA, Flow Cytometry and ChIP research applications.
Applications	Pep-ELISA/FC/ChIP
Host/Source	Goat
Reactivity	Human

PRODUCT PROPERTIES

Clonality	Polyclonal
Clone ID	
Concentration	0.5 mg/mL
Conjugation	Unconjugated
Purification	Purified from goat serum by ammonium sulphate precipitation followed by antigen affinity chromatography using the immunizing peptide.
Dilution Range	Peptide ELISA: antibody detection limit dilution 1:32000. FC: Flow cytometric analysis of HEK293 cells. Recommended concentration: 10 µg/ml. ChIP: This product has been successfully used in ChIP on Mouse: Hondares E et al. (2011)
Formulation	0.5 mg/ml in Tris saline, 0.02% sodium azide, pH7.3 with 0.5% bovine serum albumin. NA
Isotype	IgG
Storage Instruction	Store at -20°C on receipt and minimise freeze-thaw cycles.

TARGET INFORMATION

Gene ID	63976
Gene Symbol	PRDM16
Uniprot ID	PRDM16_HUMAN
Immunogen	
Immunogen Region	C-Term
Specificity	This antibody is expected to recognise both reported isoforms.
Immunogen Sequence	TSESGAFHPINHL



STJ70230 Flow cytometric analysis of paraformaldehyde fixed HEK293 cells (blue line), permeabilized with 0.5% Triton. Primary incubation 1hr (10 µg/ml) followed by Alexa Fluor 488 secondary antibody (1 µg/ml). IgG control: Unimmunized goat IgG (black line) followed by Alexa Fluor 488 secondary antibody.

This product is suitable for in-vitro studies under the RESEARCH USE ONLY [RUO] licence. This product must not be used as for diagnostic or other medical purposes.
St John's Laboratory Ltd, Knowledge Dock Business Centre, University Way, London, E16 2RD | Tel: 0208 223 3081