

## Anti-Claudin 14/CLDN14 antibody (C-Term) (STJ70212)

STJ70212

### GENERAL INFORMATION

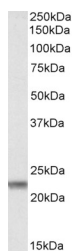
<b>Product Type</b>	Primary antibodies
<b>Short Description</b>	Goat polyclonal antibody anti-Claudin 14/CLDN14 (C-Term) is suitable for use in ELISA and Western Blot research applications.
<b>Applications</b>	Pep-ELISA/WB
<b>Host/Source</b>	Goat
<b>Reactivity</b>	Human/Mouse/Rat/Dog/Pig/Cow

### PRODUCT PROPERTIES

<b>Clonality</b>	Polyclonal
<b>Clone ID</b>	
<b>Concentration</b>	0.5 mg/mL
<b>Conjugation</b>	Unconjugated
<b>Purification</b>	Purified from goat serum by ammonium sulphate precipitation followed by antigen affinity chromatography using the immunizing peptide.
<b>Dilution Range</b>	Peptide ELISA: antibody detection limit dilution 1:4000. WB: Approx 23kDa band observed in Human Liver Lysate (calculated MW of 25.7kDa according to NP_652763.1). Recommended concentration: 0.3-1µg/ml.
<b>Formulation</b>	0.5 mg/ml in Tris saline, 0.02% sodium azide, pH7.3 with 0.5% bovine serum albumin. NA
<b>Isotype</b>	IgG
<b>Storage</b>	Store at -20°C on receipt and minimise freeze-thaw cycles.
<b>Instruction</b>	

### TARGET INFORMATION

<b>Gene ID</b>	23562
<b>Gene Symbol</b>	CLDN14
<b>Uniprot ID</b>	CLD14_HUMAN
<b>Immunogen</b>	
<b>Immunogen Region</b>	C-Term
<b>Specificity</b>	Reported variants represent identical protein (NP_036262.1; NP_652763.1; NP_001139551.1; NP_001139550.1 and NP_001139549.1).
<b>Immunogen Sequence</b>	SATHSGYRLNDYV



STJ70212 (0.3 µg/ml) staining of Human Liver lysate (35 µg protein in RIPA buffer). Primary incubation was 1 hour. Detected by chemiluminescence.