

Anti-KLF15 antibody (N-Term) (STJ70188)

STJ70188

GENERAL INFORMATION

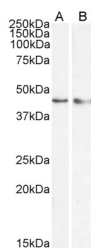
Product Type	Primary antibodies
Short Description	Goat polyclonal antibody anti-KLF15 (N-Term) is suitable for use in ELISA, Western Blot and Flow Cytometry research applications.
Applications	Pep-ELISA/WB/FC
Host/Source	Goat
Reactivity	Human/Mouse/Rat/Pig

PRODUCT PROPERTIES

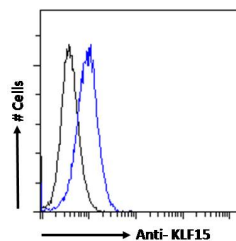
Clonality	Polyclonal
Clone ID	
Concentration	0.5 mg/mL
Conjugation	Unconjugated
Purification	Purified from goat serum by ammonium sulphate precipitation followed by antigen affinity chromatography using the immunizing peptide.
Dilution Range	Peptide ELISA: antibody detection limit dilution 1:64000. WB: Approx 45kDa band observed in HeLa and in nuclear cell lysates of HepG2 (calculated MW of 44kDa according to NP_054798.1). Recommended concentration: 0.3-1µg/ml. Primary incubation 1 h
Formulation	0.5 mg/ml in Tris saline, 0.02% sodium azide, pH7.3 with 0.5% bovine serum albumin. NA
Isotype	IgG
Storage Instruction	Store at -20°C on receipt and minimise freeze-thaw cycles.

TARGET INFORMATION

Gene ID	28999
Gene Symbol	KLF15
Uniprot ID	KLF15_HUMAN
Immunogen	
Immunogen Region	N-Term
Specificity	
Immunogen Sequence	VDHLLPVDEFSS



STJ70188 (1µg/ml) staining of nuclear HepG2 (A) and (0.5µg/ml) HeLa (B) cell lysate (35µg protein in RIPA buffer). Detected by chemiluminescence.



STJ70188 Flow cytometric analysis of paraformaldehyde fixed HepG2 cells (blue line) permeabilized with 0.5% Triton. Primary incubation 1hr (10µg/ml) followed by Alexa Fluor 488 secondary antibody (1µg/ml). IgG control: Unimmunized goat IgG (black line) followed by Alexa Fluor 488 secondary antibody.

This product is suitable for in-vitro studies under the RESEARCH USE ONLY [RUO] licence. This product must not be used as for diagnostic or other medical purposes.
St John's Laboratory Ltd, Knowledge Dock Business Centre, University Way, London, E16 2RD | Tel: 0208 223 3081