

Anti-ING2/ING1L antibody (C-Term) (STJ70185)

STJ70185

GENERAL INFORMATION

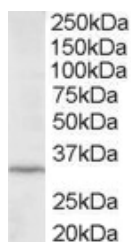
Product Type	Primary antibodies
Short Description	Goat polyclonal antibody anti-ING2/ING1L (C-Term) is suitable for use in ELISA and Western Blot research applications.
Applications	Pep-ELISA/WB
Host/Source	Goat
Reactivity	Human/Cow

PRODUCT PROPERTIES

Clonality	Polyclonal
Clone ID	
Concentration	0.5 mg/mL
Conjugation	Unconjugated
Purification	Purified from goat serum by ammonium sulphate precipitation followed by antigen affinity chromatography using the immunizing peptide.
Dilution Range	Peptide ELISA: antibody detection limit dilution 1:1000. WB: Approx 30kDa band observed in hepatocarcinoma HEPG2 lysates (calculated MW of 32.8kDa according to NP_001555). Recommended concentration: 1-3µg/ml.
Formulation	0.5 mg/ml in Tris saline, 0.02% sodium azide, pH7.3 with 0.5% bovine serum albumin. NA
Isotype	IgG
Storage Instruction	Store at -20°C on receipt and minimise freeze-thaw cycles.

TARGET INFORMATION

Gene ID	3622
Gene Symbol	ING2
Uniprot ID	ING2_HUMAN
Immunogen	
Immunogen Region	C-Term
Specificity	
Immunogen Sequence	DKSTEKTKDRRSR



STJ70185 staining (2µg/ml) of HepG2 lysate (RIPA buffer, 35µg total protein per lane). Primary incubated for 12 hour. Detected by chemiluminescence.