

Anti-GULP1/CED6 antibody (C-Term) (STJ70182)

STJ70182

GENERAL INFORMATION

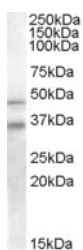
Product Type	Primary antibodies
Short Description	Goat polyclonal antibody anti-GULP1/CED6 (C-Term) is suitable for use in ELISA, Western Blot and Immunohistochemistry research applications.
Applications	Pep-ELISA/WB/IHC
Host/Source	Goat
Reactivity	Human/Mouse/Rat/Dog

PRODUCT PROPERTIES

Clonality	Polyclonal
Clone ID	
Concentration	0.5 mg/mL
Conjugation	Unconjugated
Purification	Purified from goat serum by ammonium sulphate precipitation followed by antigen affinity chromatography using the immunizing peptide.
Dilution Range	Peptide ELISA: antibody detection limit dilution 1:64000. WB: Approx 35kDa band observed in Human Placenta lysates (calculated MW of 34.5kDa according to NP_057399.1). Recommended concentration: 0.2-0.6µg/mL. An additional band of unknown identity
Formulation	0.5 mg/ml in Tris saline, 0.02% sodium azide, pH7.3 with 0.5% bovine serum albumin. NA
Isotype	IgG
Storage Instruction	Store at -20°C on receipt and minimise freeze-thaw cycles.

TARGET INFORMATION

Gene ID	51454
Gene Symbol	GULP1
Uniprot ID	GULP1_HUMAN
Immunogen	
Immunogen Region	C-Term
Specificity	
Immunogen Sequence	EGTVFCLDPLDSRC



STJ70182 staining (0.2 µg/ml) of Human Placenta lysate (RIPA buffer, 30 µg total protein per lane). Primary incubated for 1 hour. Detected by chemiluminescence.

This product is suitable for in-vitro studies under the RESEARCH USE ONLY [RUO] licence. This product must not be used as for diagnostic or other medical purposes.
St John's Laboratory Ltd, Knowledge Dock Business Centre, University Way, London, E16 2RD | Tel: 0208 223 3081