

Anti-KLF1/EKLF antibody (N-Term) (STJ70157)

STJ70157

GENERAL INFORMATION

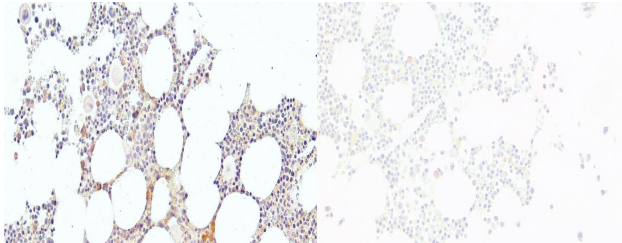
Product Type	Primary antibodies
Short Description	Goat polyclonal antibody anti-KLF1/EKLF (N-Term) is suitable for use in ELISA and Immunohistochemistry research applications.
Applications	Pep-ELISA/IHC
Host/Source	Goat
Reactivity	Human/Dog/Pig/Cow

PRODUCT PROPERTIES

Clonality	Polyclonal
Clone ID	
Concentration	0.5 mg/mL
Conjugation	Unconjugated
Purification	Purified from goat serum by ammonium sulphate precipitation followed by antigen affinity chromatography using the immunizing peptide.
Dilution Range	Peptide ELISA: antibody detection limit dilution 1:128000. IHC: Paraffin embedded Human Bone Marrow. Staining in hematopoietic and stroma cells. Recommended concentration: 4-6µg/ml.
Formulation	0.5 mg/ml in Tris saline, 0.02% sodium azide, pH7.3 with 0.5% bovine serum albumin. NA
Isotype	IgG
Storage Instruction	Store at -20°C on receipt and minimise freeze-thaw cycles.

TARGET INFORMATION

Gene ID	10661
Gene Symbol	KLF1
Uniprot ID	KLF1_HUMAN
Immunogen	
Immunogen Region	N-Term
Specificity	
Immunogen Sequence	ATAETALPSISTLT



STJ70157 (4µg/ml) staining of paraffin embedded Human Bone Marrow. Heat induced antigen retrieval with citrate buffer Ph 6, HRP-staining.

STJ70157 Negative Control showing staining of paraffin embedded Human Bone Marrow, with no primary antibody.

This product is suitable for in-vitro studies under the RESEARCH USE ONLY [RUO] licence. This product must not be used as for diagnostic or other medical purposes.
St John's Laboratory Ltd, Knowledge Dock Business Centre, University Way, London, E16 2RD | Tel: 0208 223 3081