

Anti-KLF3/BKLF antibody (N-Term) (STJ70156)

STJ70156

GENERAL INFORMATION

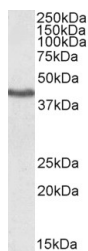
| | |
|--------------------------|-----------------------------------------------------------------------------------------------------------------------------------------------------------|
| Product Type | Primary antibodies |
| Short Description | Goat polyclonal antibody anti-KLF3/BKLF (N-Term) is suitable for use in ELISA, Western Blot, Immunofluorescence and Flow Cytometry research applications. |
| Applications | Pep-ELISA/WB/IF/FC |
| Host/Source | Goat |
| Reactivity | Human/Mouse/Rat/Dog/Pig/Cow |

PRODUCT PROPERTIES

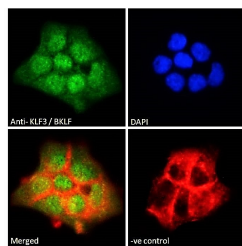
| | |
|----------------------------|-------------------------------------------------------------------------------------------------------------------------------------------------------------------------------------------------------------------------------------------------------------|
| Clonality | Polyclonal |
| Clone ID | |
| Concentration | 0.5 mg/mL |
| Conjugation | Unconjugated |
| Purification | Purified from goat serum by ammonium sulphate precipitation followed by antigen affinity chromatography using the immunizing peptide. |
| Dilution Range | Peptide ELISA: antibody detection limit dilution 1:32000. WB: Approx 38-40kDa band observed in Human Heart lysates (predicted MW of 38.8Da according to NP_057615.3). Recommended concentration: 1-3µg/ml. Primary incubation 1 hour at room temperature |
| Formulation | 0.5 mg/ml in Tris saline, 0.02% sodium azide, pH7.3 with 0.5% bovine serum albumin. NA |
| Isotype | IgG |
| Storage Instruction | Store at -20°C on receipt and minimise freeze-thaw cycles. |

TARGET INFORMATION

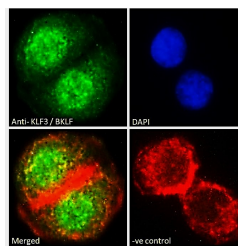
| | |
|---------------------------|----------------|
| Gene ID | 51274 |
| Gene Symbol | KLF3 |
| Uniprot ID | KLF3_HUMAN |
| Immunogen | |
| Immunogen Region | N-Term |
| Specificity | |
| Immunogen Sequence | LMFDPVPVKQEAMD |



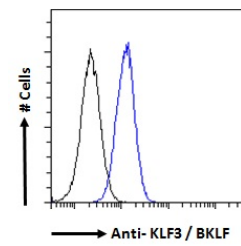
STJ70156 (1µg/ml) staining of Human Heart lysate. (35µg protein in RIPA buffer). Detected by chemiluminescence.



STJ70156 Immunofluorescence analysis of paraformaldehyde fixed A431 cells, permeabilized with 0.15% Triton. Primary incubation 1hr (10µg/ml) followed by Alexa Fluor 488 secondary antibody (2µg/ml), showing nuclear staining. Actin filaments were stained with phalloidin (red) and the nuclear stain is DAPI (blue). Negative control: Unimmunized goat IgG (10µg/ml) followed by Alexa Fluor 488 secondary antibody (2µg/ml).



STJ70156 Immunofluorescence analysis of paraformaldehyde fixed A549 cells, permeabilized with 0.15% Triton. Primary incubation 1hr (10µg/ml) followed by Alexa Fluor 488 secondary antibody (2µg/ml), showing nuclear staining. Actin filaments were stained with phalloidin (red) and the nuclear stain is DAPI (blue). Negative control: Unimmunized goat IgG (10µg/ml) followed by Alexa Fluor 488 secondary antibody (2µg/ml).



STJ70156 Flow cytometric analysis of paraformaldehyde fixed A431 cells (blue line), permeabilized with 0.5% Triton. Primary incubation 1hr (10µg/ml) followed by Alexa Fluor 488 secondary antibody (1µg/ml). IgG control: Unimmunized goat IgG (black line) followed by Alexa Fluor 488 secondary antibody.

This product is suitable for in-vitro studies under the RESEARCH USE ONLY [RUO] licence. This product must not be used as for diagnostic or other medical purposes.

St John's Laboratory Ltd, Knowledge Dock Business Centre, University Way, London, E16 2RD | Tel: 0208 223 3081