

Anti-BCAP31/BAP31 antibody (C-Term) (STJ70154)

STJ70154

GENERAL INFORMATION

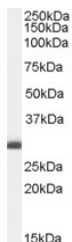
Product Type	Primary antibodies
Short Description	Goat polyclonal antibody anti-BCAP31/BAP31 (C-Term) is suitable for use in ELISA, Western Blot and Immunohistochemistry research applications.
Applications	Pep-ELISA/WB/IHC
Host/Source	Goat
Reactivity	Human/Dog/Pig/Cow

PRODUCT PROPERTIES

Clonality	Polyclonal
Clone ID	
Concentration	0.5 mg/mL
Conjugation	Unconjugated
Purification	Purified from goat serum by ammonium sulphate precipitation followed by antigen affinity chromatography using the immunizing peptide.
Dilution Range	Peptide ELISA: antibody detection limit dilution 1:32000. WB: Approx 30kDa band observed in Human Placenta and Brain lysate (predicted MW of 28kDa according to NP_005736). Recommended for use at 1-3µg/ml. IHC: Paraffin embedded Human Kidney a
Formulation	0.5 mg/ml in Tris saline, 0.02% sodium azide, pH7.3 with 0.5% bovine serum albumin. NA
Isotype	IgG
Storage	Store at -20°C on receipt and minimise freeze-thaw cycles.
Instruction	

TARGET INFORMATION

Gene ID	10134
Gene Symbol	BCAP31
Uniprot ID	BAP31_HUMAN
Immunogen	
Immunogen Region	C-Term
Specificity	This antibody is expected to recognise isoform a (NP_001132929.1) and isoform b (NP_005736.3; NP_001132913.1).
Immunogen Sequence	QAAVDGPMDKKEE



STJ70154 (0.1 µg/ml) staining of Human Breast lysate (35 µg protein in RIPA buffer). Primary incubation was 1 hour. Detected by chemiluminescence.