

Anti-DKK3/REIC antibody (C-Term) (STJ70137)

STJ70137

GENERAL INFORMATION

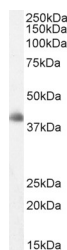
| | |
|--------------------------|---|
| Product Type | Primary antibodies |
| Short Description | Goat polyclonal antibody anti-DKK3/REIC (C-Term) is suitable for use in ELISA and Western Blot research applications. |
| Applications | Pep-ELISA/WB |
| Host/Source | Goat |
| Reactivity | Human |

PRODUCT PROPERTIES

| | |
|----------------------------|---|
| Clonality | Polyclonal |
| Clone ID | |
| Concentration | 0.5 mg/mL |
| Conjugation | Unconjugated |
| Purification | Purified from goat serum by ammonium sulphate precipitation followed by antigen affinity chromatography using the immunizing peptide. |
| Dilution Range | Peptide ELISA: antibody detection limit dilution 1:16000. WB: Approx 38kDa band observed in Human Brain (Cerebellum) lysates (calculated MW of 38.4kDa according to NP_037385.2). Recommended concentration: 1-3µg/ml. Primary incubation 1 hour at room temperature. |
| Formulation | 0.5 mg/ml in Tris saline, 0.02% sodium azide, pH7.3 with 0.5% bovine serum albumin. NA |
| Isotype | IgG |
| Storage Instruction | Store at -20°C on receipt and minimise freeze-thaw cycles. |

TARGET INFORMATION

| | |
|---------------------------|---|
| Gene ID | 27122 |
| Gene Symbol | DKK3 |
| Uniprot ID | DKK3_HUMAN |
| Immunogen | |
| Immunogen Region | C-Term |
| Specificity | NP_037385.2; NP_056965.3 and NP_001018067.1 are variants of the same protein. |
| Immunogen Sequence | AAAALLGGEEI |



STJ70137 staining (2µg/ml) of Human Cerebellum lysate (RIPA buffer, 35µg total protein per lane). Detected by chemiluminescence.

This product is suitable for in-vitro studies under the RESEARCH USE ONLY [RUO] licence. This product must not be used as for diagnostic or other medical purposes.
St John's Laboratory Ltd, Knowledge Dock Business Centre, University Way, London, E16 2RD | Tel: 0208 223 3081