

Anti-TERF1/PIN2 antibody (C-Term) (STJ70127)

STJ70127

GENERAL INFORMATION

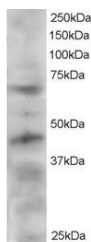
Product Type	Primary antibodies
Short Description	Goat polyclonal antibody anti-TERF1/PIN2 (C-Term) is suitable for use in ELISA and Western Blot research applications.
Applications	Pep-ELISA/WB
Host/Source	Goat
Reactivity	Human/Pig/Cow

PRODUCT PROPERTIES

Clonality	Polyclonal
Clone ID	
Concentration	0.5 mg/mL
Conjugation	Unconjugated
Purification	Purified from goat serum by ammonium sulphate precipitation followed by antigen affinity chromatography using the immunizing peptide.
Dilution Range	Peptide ELISA: antibody detection limit dilution 1:8000. WB: Approx 60-65kDa and 45kDa bands seen in HeLa lysate. Recommended for use at 1-3µg/ml.
Formulation	0.5 mg/ml in Tris saline, 0.02% sodium azide, pH7.3 with 0.5% bovine serum albumin. NA
Isotype	IgG
Storage Instruction	Store at -20°C on receipt and minimise freeze-thaw cycles.

TARGET INFORMATION

Gene ID	7013
Gene Symbol	TERF1
Uniprot ID	TERF1_HUMAN
Immunogen	
Immunogen Region	C-Term
Specificity	This antibody is expected to recognise isoform 1 (NP_059523.2) and isoform 2 (NP_003209.2).
Immunogen Sequence	TMKKLKLISDSED



STJ70127 staining (2Åug/ml) of HeLa lysate (RIPA buffer, 30Åug total protein per lane). Primary incubated for 12 hour. Detected by western blot using chemiluminescence.

This product is suitable for in-vitro studies under the RESEARCH USE ONLY [RUO] licence. This product must not be used as for diagnostic or other medical purposes.
St John's Laboratory Ltd, Knowledge Dock Business Centre, University Way, London, E16 2RD | Tel: 0208 223 3081