

## Anti-DUSP8/HVH5 antibody (N-Term) (STJ70123)

STJ70123

### GENERAL INFORMATION

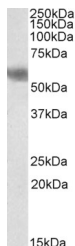
<b>Product Type</b>	Primary antibodies
<b>Short Description</b>	Goat polyclonal antibody anti-DUSP8/HVH5 (N-Term) is suitable for use in ELISA and Western Blot research applications.
<b>Applications</b>	Pep-ELISA/WB
<b>Host/Source</b>	Goat
<b>Reactivity</b>	Human/Mouse/Rat/Cow

### PRODUCT PROPERTIES

<b>Clonality</b>	Polyclonal
<b>Clone ID</b>	
<b>Concentration</b>	0.5 mg/mL
<b>Conjugation</b>	Unconjugated
<b>Purification</b>	Purified from goat serum by ammonium sulphate precipitation followed by antigen affinity chromatography using the immunizing peptide.
<b>Dilution Range</b>	Peptide ELISA: antibody detection limit dilution 1:4000. WB: Approx 55-58kDa band observed in Human (Cerebellum) , Mouse and Rat Brain lysates (calculated MW of 65.8kDa according to Human NP_004411.2, 68.8kDa according to Mouse NP_032774.1 and 66
<b>Formulation</b>	0.5 mg/ml in Tris saline, 0.02% sodium azide, pH7.3 with 0.5% bovine serum albumin. NA
<b>Isotype</b>	IgG
<b>Storage Instruction</b>	Store at -20°C on receipt and minimise freeze-thaw cycles.

### TARGET INFORMATION

<b>Gene ID</b>	1850
<b>Gene Symbol</b>	DUSP8
<b>Uniprot ID</b>	DUS8_HUMAN
<b>Immunogen</b>	
<b>Immunogen Region</b>	N-Term
<b>Specificity</b>	This antibody is also expected to recognise the hypothetical human protein similar to dual specificity phosphatase 8 (XM_114902) , which is virtually identical.
<b>Immunogen Sequence</b>	AGDRLPRKVMDAK



STJ70123 (2 $\mu$ g/ml) staining of Human Cerebellum (A) , Mouse (B) , and Rat (C) Brain lysate (35 $\mu$ g protein in RIPA buffer). Primary incubation was 1 hour. Detected by chemiluminescence.

This product is suitable for in-vitro studies under the RESEARCH USE ONLY [RUO] licence. This product must not be used as for diagnostic or other medical purposes.  
St John's Laboratory Ltd, Knowledge Dock Business Centre, University Way, London, E16 2RD | Tel: 0208 223 3081