

Anti-B56 beta isoform-Isoform Beta antibody (C-Term) (STJ70086)

STJ70086

GENERAL INFORMATION

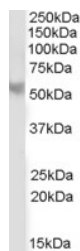
Product Type	Primary antibodies
Short Description	Goat polyclonal antibody anti-B56 beta isoform-Isoform Beta (C-Term) is suitable for use in ELISA and Western Blot research applications.
Applications	Pep-ELISA/WB
Host/Source	Goat
Reactivity	Human

PRODUCT PROPERTIES

Clonality	Polyclonal
Clone ID	
Concentration	0.5 mg/mL
Conjugation	Unconjugated
Purification	Purified from goat serum by ammonium sulphate precipitation followed by antigen affinity chromatography using the immunizing peptide.
Dilution Range	Peptide ELISA: antibody detection limit dilution 1:2000. WB: Approx. 55kDa band observed in Human Brain (Cerebellum) lysates (calculated MW of 57.4kDa according to NP_006235.1). Recommended concentration: 2-3µg/ml. Primary incubation was 1 hour.
Formulation	0.5 mg/ml in Tris saline, 0.02% sodium azide, pH7.3 with 0.5% bovine serum albumin. NA
Isotype	IgG
Storage Instruction	Store at -20°C on receipt and minimise freeze-thaw cycles.

TARGET INFORMATION

Gene ID	5526
Gene Symbol	PPP2R5B
Uniprot ID	2A5B_HUMAN
Immunogen	
Immunogen Region	C-Term
Specificity	
Immunogen Sequence	QRLTPQVAASGGQS



STJ70086 (2µg/ml) staining of Human Cerebellum lysate (35µg protein in RIPA buffer). Detected by chemiluminescence.