

Anti-MTA1 antibody (Internal) (STJ70060)

STJ70060

GENERAL INFORMATION

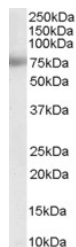
Product Type	Primary antibodies
Short Description	Goat polyclonal antibody anti-MTA1 (Internal) is suitable for use in ELISA, Western Blot and Immunohistochemistry research applications.
Applications	Pep-ELISA/WB/IHC
Host/Source	Goat
Reactivity	Human

PRODUCT PROPERTIES

Clonality	Polyclonal
Clone ID	
Concentration	0.5 mg/mL
Conjugation	Unconjugated
Purification	Purified from goat serum by ammonium sulphate precipitation followed by antigen affinity chromatography using the immunizing peptide.
Dilution Range	Peptide ELISA: antibody detection limit dilution 1:16000. WB: Approx 75kDa band observed in Human Placenta lysates (calculated MW of 80.8kDa according to NP_004680.1). Recommended concentration: 0.03-0.1 µg/ml. IHC: Paraffin embedded Human Tes
Formulation	0.5 mg/ml in Tris saline, 0.02% sodium azide, pH7.3 with 0.5% bovine serum albumin. NA
Isotype	IgG
Storage	Store at -20°C on receipt and minimise freeze-thaw cycles.
Instruction	

TARGET INFORMATION

Gene ID	9112
Gene Symbol	MTA1
Uniprot ID	MTA1_HUMAN
Immunogen	
Immunogen Region	Internal
Specificity	Immunizing peptide was designed based on NP_004680.1. The version changed to NP_004680.2 and no longer matches with the peptide.
Immunogen Sequence	PGDVFYMPKE



STJ70060 staining (0.03 µg/ml) of Human Placenta lysate (RIPA buffer, 35 µg total protein per lane). Primary incubated for 1 hour. Detected by chemiluminescence.

This product is suitable for in-vitro studies under the RESEARCH USE ONLY [RUO] licence. This product must not be used as for diagnostic or other medical purposes.
St John's Laboratory Ltd, Knowledge Dock Business Centre, University Way, London, E16 2RD | Tel: 0208 223 3081