

Anti-TRPM7/LTRPC7 antibody (C-Term) (STJ70049)

STJ70049

GENERAL INFORMATION

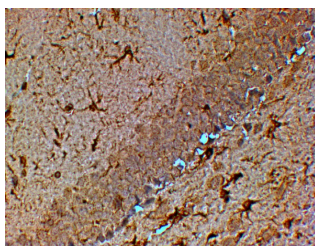
Product Type	Primary antibodies
Short Description	Goat polyclonal antibody anti-TRPM7/LTRPC7 (C-Term) is suitable for use in ELISA, Immunohistochemistry and Immunofluorescence research applications.
Applications	Pep-ELISA/IHC/IF
Host/Source	Goat
Reactivity	Human/Mouse/Rat/Dog/Pig

PRODUCT PROPERTIES

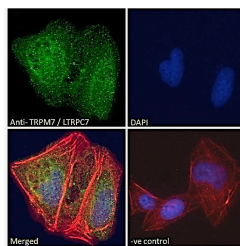
Clonality	Polyclonal
Clone ID	
Concentration	0.5 mg/mL
Conjugation	Unconjugated
Purification	Purified from goat serum by ammonium sulphate precipitation followed by antigen affinity chromatography using the immunizing peptide.
Dilution Range	Peptide ELISA: antibody detection limit dilution 1:8000. IHC: In paraffin embedded Mouse Brain shows neuronal staining in the Hippocampus. Recommended concentration: 4-6µg/ml. IF: Strong expression of the protein seen in the cytoplasm and nuc
Formulation	0.5 mg/ml in Tris saline, 0.02% sodium azide, pH7.3 with 0.5% bovine serum albumin. NA
Isotype	IgG
Storage Instruction	Store at -20°C on receipt and minimise freeze-thaw cycles.

TARGET INFORMATION

Gene ID	54822
Gene Symbol	TRPM7
Uniprot ID	TRPM7_HUMAN
Immunogen	
Immunogen Region	C-Term
Specificity	
Immunogen Sequence	TKESESTNSVRLML



STJ70049 (4µg/ml) staining of paraffin embedded Mouse Hippocampus. Stained antigen retrieval with citrate buffer pH 6, HRP-staining. Similar results were obtained after antigen retrieval at pH9.



STJ70049 Immunofluorescence analysis of paraformaldehyde fixed U2OS cells, permeabilized with 0.15% Triton. Primary incubation 1hr (10µg/ml) followed by Alexa Fluor 488 secondary antibody (2µg/ml), showing nuclear and cytoplasmic staining. Actin filaments were stained with phalloidin (red) and the nuclear stain is DAPI (blue). Negative control: Unimmunized goat IgG (10µg/ml) followed by Alexa Fluor 488 secondary antibody (2µg/ml).

This product is suitable for in-vitro studies under the RESEARCH USE ONLY [RUO] licence. This product must not be used as for diagnostic or other medical purposes.
St John's Laboratory Ltd, Knowledge Dock Business Centre, University Way, London, E16 2RD | Tel: 0208 223 3081