

Anti-STAT3-Isoform 1/2 antibody (C-Term) (STJ70033)

STJ70033

GENERAL INFORMATION

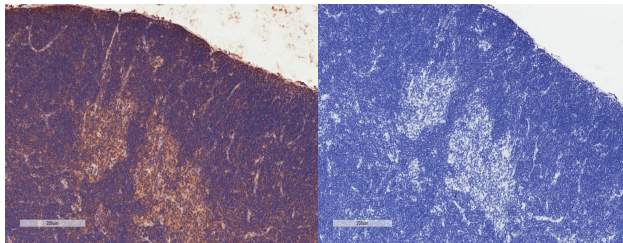
Product Type	Primary antibodies
Short Description	Goat polyclonal antibody anti-STAT3-Isoform 1/2 (C-Term) is suitable for use in ELISA, Immunohistochemistry, Immunofluorescence and Flow Cytometry research applications.
Applications	Pep-ELISA/IHC/IF/FC
Host/Source	Goat
Reactivity	Human/Mouse/Rat/Cow

PRODUCT PROPERTIES

Clonality	Polyclonal
Clone ID	
Concentration	0.5 mg/mL
Conjugation	Unconjugated
Purification	Purified from goat serum by ammonium sulphate precipitation followed by antigen affinity chromatography using the immunizing peptide.
Dilution Range	Peptide ELISA: antibody detection limit dilution 1:16000. IHC: Paraffin embedded Human Liver. Recommended concentration: 6-7µg/ml. IF: Strong expression of the protein seen in the Golgi and cytoplasm of HeLa and A431 cells. Recommended concentration: 6-7µg/ml. FC: Flow
Formulation	0.5 mg/ml in Tris saline, 0.02% sodium azide, pH7.3 with 0.5% bovine serum albumin. NA
Isotype	IgG
Storage	Store at -20°C on receipt and minimise freeze-thaw cycles.
Instruction	

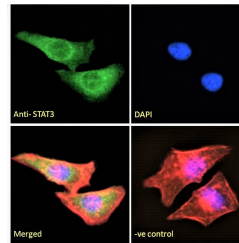
TARGET INFORMATION

Gene ID	6774
Gene Symbol	STAT3
Uniprot ID	STAT3_HUMAN
Immunogen	
Immunogen Region	C-Term
Specificity	This antibody is expected to recognise isoforms 1 and 2 (as represented by NP_644805.1 and NP_003141.2 respectively)
Immunogen Sequence	DMELTSECATSPM

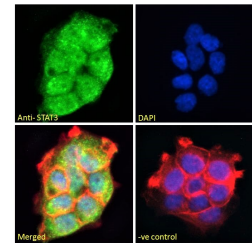


STJ70033 (4µg/ml) staining of paraffin embedded Mouse Thymus. Microwaved antigen retrieval with citrate buffer pH 6, HRP-staining.

STJ70033 Negative Control showing staining of paraffin embedded Mouse Thymus, with no primary antibody.



STJ70033 Immunofluorescence analysis of paraformaldehyde fixed HeLa cells, permeabilized with 0.15% Triton. Primary incubation 1hr (10µg/ml) followed by Alexa Fluor 488 secondary antibody (2µg/ml) showing cytoplasmic and weak nuclear staining. Actin filaments were stained with phalloidin (red) and the nuclear stain is DAPI (blue). Negative control: Unimmunized goat IgG (10µg/ml) followed by Alexa Fluor 488 secondary antibody (2µg/ml).



STJ70033 Immunofluorescence analysis of paraformaldehyde fixed A431 cells, permeabilized with 0.15% Triton. Primary incubation 1hr (10µg/ml) followed by Alexa Fluor 488 secondary antibody (2µg/ml) showing nuclear and cytoplasmic staining. Actin filaments were stained with phalloidin (red) and the nuclear stain is DAPI (blue). Negative control: Unimmunized goat IgG (10µg/ml) followed by Alexa Fluor 488 secondary antibody (2µg/ml).

This product is suitable for in-vitro studies under the RESEARCH USE ONLY [RUO] licence. This product must not be used as for diagnostic or other medical purposes.
St John's Laboratory Ltd, Knowledge Dock Business Centre, University Way, London, E16 2RD | Tel: 0208 223 3081