

Anti-DAPP1 antibody (C-Term) (STJ70032)

STJ70032

GENERAL INFORMATION

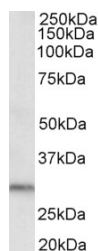
Product Type	Primary antibodies
Short Description	Goat polyclonal antibody anti-DAPP1 (C-Term) is suitable for use in ELISA and Western Blot research applications.
Applications	Pep-ELISA/WB
Host/Source	Goat
Reactivity	Human

PRODUCT PROPERTIES

Clonality	Polyclonal
Clone ID	
Concentration	0.5 mg/mL
Conjugation	Unconjugated
Purification	Purified from goat serum by ammonium sulphate precipitation followed by antigen affinity chromatography using the immunizing peptide.
Dilution Range	Peptide ELISA: antibody detection limit dilution 1:4000. WB: Approx 30kDa band observed in Human Kidney lysates (calculated MW of 32.0kDa according to AAF14578.1). Recommended concentration: 0.5-1µg/ml.
Formulation	0.5 mg/ml in Tris saline, 0.02% sodium azide, pH7.3 with 0.5% bovine serum albumin. NA
Isotype	IgG
Storage Instruction	Store at -20°C on receipt and minimise freeze-thaw cycles.

TARGET INFORMATION

Gene ID	27071
Gene Symbol	DAPP1
Uniprot ID	DAPP1_HUMAN
Immunogen	
Immunogen Region	C-Term
Specificity	This antibody was raised against the C-terminus of NP_055210.1. However, NCBI has changed the version to NP_055210.2 thus losing the C-terminal epitope.
Immunogen Sequence	SALCISPEEKTDHK



STJ70032 (0.5 µg/ml) staining of Human Kidney lysate (35 µg protein in RIPA buffer). Primary incubation was 1 hour. Detected by chemiluminescence.

This product is suitable for in-vitro studies under the RESEARCH USE ONLY [RUO] licence. This product must not be used as for diagnostic or other medical purposes.
St John's Laboratory Ltd, Knowledge Dock Business Centre, University Way, London, E16 2RD | Tel: 0208 223 3081