

Anti-MAX antibody (C-Term) (STJ70025)

STJ70025

GENERAL INFORMATION

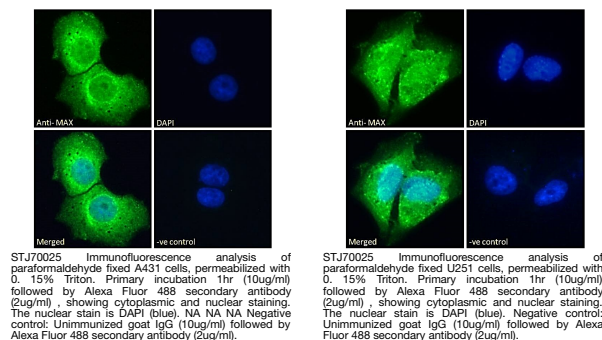
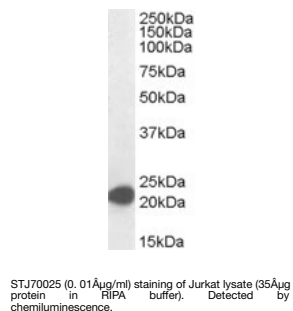
Product Type	Primary antibodies
Short Description	Goat polyclonal antibody anti-MAX (C-Term) is suitable for use in ELISA, Western Blot, Immunofluorescence and Immunohistochemistry research applications.
Applications	Pep-ELISA/WB/IF/IHC
Host/Source	Goat
Reactivity	Human/Mouse/Rat/Dog/Cow

PRODUCT PROPERTIES

Clonality	Polyclonal
Clone ID	
Concentration	0.5 mg/mL
Conjugation	Unconjugated
Purification	Purified from goat serum by ammonium sulphate precipitation followed by antigen affinity chromatography using the immunizing peptide.
Dilution Range	Peptide ELISA: antibody detection limit dilution 1:32000. WB: Approx 22kDa band observed in lysates of cell line Jurkat (calculated MW of 18.3kDa according to NP_002373.3). Recommended concentration: 0.01-0.03µg/ml. Primary incubation 1 hour at r
Formulation	0.5 mg/ml in Tris saline, 0.02% sodium azide, pH7.3 with 0.5% bovine serum albumin. NA
Isotype	IgG
Storage Instruction	Store at -20°C on receipt and minimise freeze-thaw cycles.

TARGET INFORMATION

Gene ID	4149
Gene Symbol	MAX
Uniprot ID	MAX_HUMAN
Immunogen	
Immunogen Region	C-Term
Specificity	This antibody is expected to recognize both reported isoforms (NP_002373.3; NP_660087.1).
Immunogen Sequence	EE PQSRKKLRMEAS



This product is suitable for in-vitro studies under the RESEARCH USE ONLY [RUO] licence. This product must not be used as for diagnostic or other medical purposes.
St John's Laboratory Ltd, Knowledge Dock Business Centre, University Way, London, E16 2RD | Tel: 0208 223 3081