

Anti-SOCS1 antibody (C-Term) (STJ70014)

STJ70014

GENERAL INFORMATION

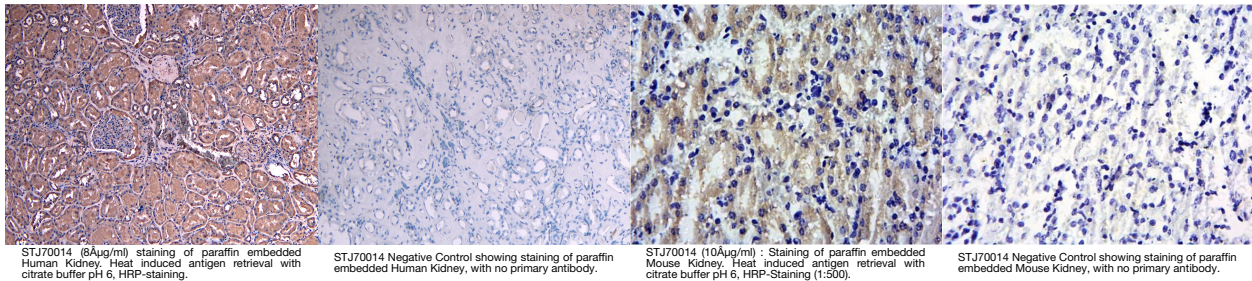
Product Type	Primary antibodies
Short Description	Goat polyclonal antibody anti-SOCS1 (C-Term) is suitable for use in ELISA, Flow Cytometry, Immunofluorescence and Immunohistochemistry research applications.
Applications	Pep-ELISA/FC/IF/IHC
Host/Source	Goat
Reactivity	Human/Mouse/Dog/Cow/Rat/Pig

PRODUCT PROPERTIES

Clonality	Polyclonal
Clone ID	
Concentration	0.5 mg/mL
Conjugation	Unconjugated
Purification	Purified from goat serum by ammonium sulphate precipitation followed by antigen affinity chromatography using the immunizing peptide.
Dilution Range	Peptide ELISA: antibody detection limit dilution 1:4000. IHC: Paraffin embedded Human Kidney. Recommended concentration: 8µg/ml. Paraffin embedded Mouse Kidney. Recommended concentration: 5-10µg/ml. IF: Expression of the protein seen in the c
Formulation	0.5 mg/ml in Tris saline, 0.02% sodium azide, pH7.3 with 0.5% bovine serum albumin. NA
Isotype	IgG
Storage	Store at -20°C on receipt and minimise freeze-thaw cycles.
Instruction	

TARGET INFORMATION

Gene ID	8651
Gene Symbol	SOCS1
Uniprot ID	SOCS1_HUMAN
Immunogen	
Immunogen Region	C-Term
Specificity	
Immunogen Sequence	VLRDYLSSFPFQI



This product is suitable for in-vitro studies under the RESEARCH USE ONLY [RUO] licence. This product must not be used as for diagnostic or other medical purposes.
St John's Laboratory Ltd, Knowledge Dock Business Centre, University Way, London, E16 2RD | Tel: 0208 223 3081