

Anti-Phospho-CD244/2B4 antibody (Internal) (STJ70003)

STJ70003

GENERAL INFORMATION

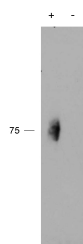
Product Type	Primary antibodies
Short Description	Goat polyclonal antibody anti-Phospho-CD244/2B4 (Internal) is suitable for use in ELISA and Immunoprecipitation research applications.
Applications	Pep-ELISA/IP
Host/Source	Goat
Reactivity	Human

PRODUCT PROPERTIES

Clonality	Polyclonal
Clone ID	
Concentration	0.5 mg/mL
Conjugation	Unconjugated
Purification	Purified from goat serum by ammonium sulphate precipitation followed by antigen affinity chromatography using the immunizing peptide.
Dilution Range	Peptide ELISA: antibody detection limit dilution 1:64000. IP: Approx 75kDa band observed in Human Natural Killer (NK) cell lysates after with immunoprecipitation mouse monoclonal antibody C1.7 coupled to Protein G agarose (calculated MW of 41.1kD)
Formulation	0.5 mg/ml in Tris saline, 0.02% sodium azide, pH7.3 with 0.5% bovine serum albumin. NA
Isotype	IgG
Storage Instruction	Store at -20°C on receipt and minimise freeze-thaw cycles.

TARGET INFORMATION

Gene ID	51744
Gene Symbol	CD244
Uniprot ID	CD244_HUMAN
Immunogen	
Immunogen Region	Internal
Specificity	
Immunogen Sequence	EFLTlpYEDVKD



STJ70003 (2 μ g/ml) staining of IP from a lysate of Human Natural Killer cells with (+) or without (-) pervanadate treatment of the cells. Primary incubation was 1 hour. Detected by chemiluminescence. Data kindly provided by Dr Nicholas G Clarkson, Sir William Dunn School of Pathology, Oxford, UK

This product is suitable for in-vitro studies under the RESEARCH USE ONLY [RUO] licence. This product must not be used as for diagnostic or other medical purposes.
St John's Laboratory Ltd, Knowledge Dock Business Centre, University Way, London, E16 2RD | Tel: 0208 223 3081