

Anti-WDR5 antibody (157-174) (STJ503518)

STJ503518

GENERAL INFORMATION

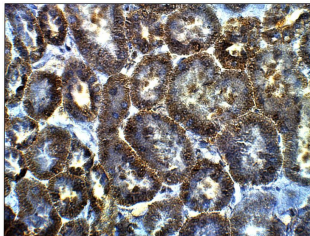
Product Type	Primary antibodies
Short Description	Rabbit polyclonal antibody anti-WDR5 (157-174) is suitable for use in ELISA, Immunohistochemistry, Immunoprecipitation and Western Blot research applications.
Applications	ELISA/IHC/IP/WB
Host/Source	Rabbit
Reactivity	A.thaliana/Bovine/Chicken/Dog/Human/Monkey/Mouse/Pig/Rat/Xenopus/Zebra Fish

PRODUCT PROPERTIES

Clonality	Polyclonal
Clone ID	
Concentration	0.67 µg/µl
Conjugation	Unconjugated
Purification	Affinity Purified
Dilution Range	WB: 1:500 DB: 1:10, 000 ELISA: 1:10, 000 IP: 1:200 IHC: 1:100
Formulation	Contains Tris, HCl/Glycine buffer pH 7.4-7.8, 30% Glycerol and 0.5% BSA, along with cryo-protective agents, Hepes, and long-term preservatives (0.02% Sodium Azide).
Isotype	IgG
Storage Instruction	Store at -20°C for long term storage. Avoid freeze-thaw cycles.

TARGET INFORMATION

Gene ID	11091
Gene Symbol	WDR5
Uniprot ID	WDR5_HUMAN
Immunogen	Synthetic peptide: DVKTGKCLKTLPAHSDPV corresponding to amino acids 157-174 of Human WDR5 protein.
Immunogen Region	157-174
Specificity	
Immunogen Sequence	



Immunohistochemistry of baboon kidney with Anti-WDR5 primary antibody (STJ503518) at 1:100 dilution in Buffer. Section was treated with DAB and Haematoxylin stain. Magnification is at 40X.