

Anti-VPS36 antibody (250-310) (STJ503503)

STJ503503

GENERAL INFORMATION

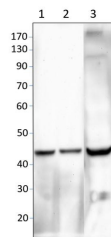
Product Type	Primary antibodies
Short Description	Rabbit polyclonal antibody anti-VPS36 (250-310) is suitable for use in ELISA, Immunoprecipitation and Western Blot research applications.
Applications	ELISA/IP/WB
Host/Source	Rabbit
Reactivity	Human

PRODUCT PROPERTIES

Clonality	Polyclonal
Clone ID	
Concentration	0.5-1.5 µg/µl
Conjugation	Unconjugated
Purification	Affinity Purified
Dilution Range	WB: 1:2, 500-1:5, 000 ELISA: 1:50, 000 IP: 1:200
Formulation	Contains Tris, HCl/Glycine buffer pH 7.4-7.8, 30% Glycerol and 0.5% BSA, along with cryo-protective agents, Hepes, and long-term preservatives (0.02% Sodium Azide).
Isotype	IgG
Storage Instruction	Store at -20°C for long term storage. Avoid freeze-thaw cycles.

TARGET INFORMATION

Gene ID	51028
Gene Symbol	VPS36
Uniprot ID	VPS36_HUMAN
Immunogen	Synthetic peptide taken within amino acid region 250-310 on human Vacuolar Protein-Sorting-associated protein 36 protein.
Immunogen Region	250-310
Specificity	
Immunogen Sequence	



Western blot with Anti-VPS36 Antibody (STJ503503) on
1) Mouse kidney, 2) Mouse kidney, 3) Rat heart.
Antibody at 1:750 dilution in buffer.