

Anti-VGluT1 antibody (1-50) (STJ503485)

STJ503485

GENERAL INFORMATION

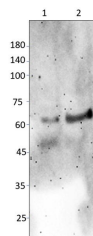
Product Type	Primary antibodies
Short Description	Rabbit polyclonal antibody anti-VGluT1 (1-50) is suitable for use in ELISA, Immunohistochemistry, Immunoprecipitation and Western Blot research applications.
Applications	ELISA/IHC/IP/WB
Host/Source	Rabbit
Reactivity	Human/Mouse/Rat

PRODUCT PROPERTIES

Clonality	Polyclonal
Clone ID	
Concentration	0.5-1.5 µg/µl
Conjugation	Unconjugated
Purification	Affinity Purified
Dilution Range	WB: 1:2, 500-1:5, 000 ELISA: 1:50, 000 IP: 1:200 IHC: 1:50-1:200
Formulation	Contains Tris, HCl/Glycine buffer pH 7.4-7.8, 30% Glycerol and 0.5% BSA, along with cryo-protective agents, Hepes, and long-term preservatives (0.02% Sodium Azide).
Isotype	IgG
Storage	Store at -20°C for long term storage. Avoid freeze-thaw cycles.
Instruction	

TARGET INFORMATION

Gene ID	72961
Gene Symbol	Slc17a7
Uniprot ID	VGLU1_MOUSE
Immunogen	Synthetic peptide taken within amino acid region 1-50 on mouse Vesicular Glutamate transporter 1 protein.
Immunogen Region	1-50
Specificity	
Immunogen Sequence	



Western blot with Anti-VGluT1 Antibody (STJ503485) on rat: 1) Cerebellum, 2) Cortex. Antibody at 1:250 dilution in buffer.