

## Anti-TRPV6 antibody (700-732) (STJ503414)

STJ503414

### GENERAL INFORMATION

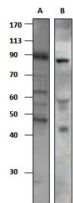
<b>Product Type</b>	Primary antibodies
<b>Short Description</b>	Rabbit polyclonal antibody anti-TRPV6 (700-732) is suitable for use in ELISA and Western Blot research applications.
<b>Applications</b>	ELISA/WB
<b>Host/Source</b>	Rabbit
<b>Reactivity</b>	Human/Mouse/Rat

### PRODUCT PROPERTIES

<b>Clonality</b>	Polyclonal
<b>Clone ID</b>	
<b>Concentration</b>	0.67 µg/µl
<b>Conjugation</b>	Unconjugated
<b>Purification</b>	Affinity Purified
<b>Dilution</b>	WB: 1:500
<b>Range</b>	DB: 1:10, 000 ELISA: 1:10, 000
<b>Formulation</b>	Contains Tris, HCl/Glycine buffer pH 7.4-7.8, 30% Glycerol and 0.5% BSA, along with cryo-protective agents, Hepes, and long-term preservatives (0.02% Sodium Azide).
<b>Isotype</b>	IgG
<b>Storage Instruction</b>	Store at -20°C for long term storage. Avoid freeze-thaw cycles.

### TARGET INFORMATION

<b>Gene ID</b>	
<b>Gene Symbol</b>	
<b>Uniprot ID</b>	
<b>Immunogen</b>	Synthetic peptide taken from the region within amino acids 700-732 of TRPV6 protein. The peptide was covalently modified to achieve desired antigenicity. Modified peptide was covalently coupled to a carrier protein by heterobifunctional cross linker
<b>Immunogen Region</b>	700-732
<b>Specificity</b>	
<b>Immunogen Sequence</b>	



Western blot with Anti-TRPV6 Antibody (STJ503414) with A) HEK293 cells, 2) TRPV6 peptide. Antibody at 1:500 dilution in buffer.