

Anti-TREX1 antibody (220-245) (STJ503387)

STJ503387

GENERAL INFORMATION

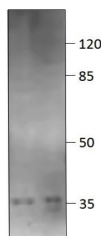
Product Type	Primary antibodies
Short Description	Rabbit polyclonal antibody anti-TREX1 (220-245) is suitable for use in ELISA, Immunohistochemistry, Immunofluorescence, Immunoprecipitation and Western Blot research applications.
Applications	ELISA/IHC/IF/IP/WB
Host/Source	Rabbit
Reactivity	Human/Mouse/Rat

PRODUCT PROPERTIES

Clonality	Polyclonal
Clone ID	
Concentration	0.55-0.75 µg/µl
Conjugation	Unconjugated
Purification	Affinity Purified
Dilution Range	WB: 1:500 DB: 1:10, 000 ELISA: 1:10, 000 IP: 1:200 IHC: 1:50-1:100 IF: 1:100
Formulation	Contains Tris, HCl/Glycine buffer pH 7.4-7.8, 30% Glycerol and 0.5% BSA, along with cryo-protective agents, Hepes, and long-term preservatives (0.02% Sodium Azide).
Isotype	IgG
Storage Instruction	Store at -20°C for long term storage. Avoid freeze-thaw cycles.

TARGET INFORMATION

Gene ID	11277
Gene Symbol	TREX1
Uniprot ID	TREX1_HUMAN
Immunogen	Synthetic peptide taken within amino acid region 220-245 on human TREX1 protein.
Immunogen Region	220-245
Specificity	This antibody is specific for TREX1. This antibody will not detect TREX2.
Immunogen Sequence	



Western blot with Anti-TREX1 Antibody (STJ503387) on rat: 1) Midbrain, 2) Cerebellum. Antibody at 1:500 dilution in buffer.

This product is suitable for in-vitro studies under the RESEARCH USE ONLY [RUO] licence. This product must not be used as for diagnostic or other medical purposes.

St John's Laboratory Ltd, Knowledge Dock Business Centre, University Way, London, E16 2RD | Tel: 0208 223 3081