

Anti-TM6SF2 antibody (220-270) (STJ503312)

STJ503312

GENERAL INFORMATION

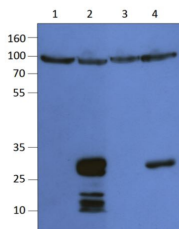
Product Type	Primary antibodies
Short Description	Rabbit polyclonal antibody anti-TM6SF2 (220-270) is suitable for use in Dot Blot, ELISA, Immunohistochemistry, Immunoprecipitation and Western Blot research applications.
Applications	DB/ELISA/IHC/IP/WB
Host/Source	Rabbit
Reactivity	Human/Mouse/Rat

PRODUCT PROPERTIES

Clonality	Polyclonal
Clone ID	
Concentration	0.68-0.70 µg/µl
Conjugation	Unconjugated
Purification	Affinity Purified
Dilution Range	WB: 1:250 DB: 1:4, 000 ELISA: 1:4, 000 IP: 1:150 IHC: 1:50-1:150
Formulation	Contains Tris, HCl/Glycine buffer pH 7.4-7.8, 30% Glycerol and 0.5% BSA, along with cryo-protective agents, Hepes, and long-term preservatives (0.02% Sodium Azide).
Isotype	IgG
Storage Instruction	Store at -20°C for long term storage. Avoid freeze-thaw cycles.

TARGET INFORMATION

Gene ID	107770
Gene Symbol	Tm6sf2
Uniprot ID	TM6S2_MOUSE
Immunogen	Synthetic peptide taken within amino acid region 220-270 on mouse TM6SF2 protein.
Immunogen Region	220-270
Specificity	
Immunogen Sequence	



Western blot with Anti-TM6SF2 Antibody (STJ503312) on 1) Empty vehicle, 2) Recombinant mouse TM6SF2, 3) Empty vehicle, 4) Recombinant human TM6SF2. Antibody at 1:500 dilution in buffer. STJ503312 on lanes 1 & 2, STJ503313 on lanes 2 & 4.

This product is suitable for in-vitro studies under the RESEARCH USE ONLY [RUO] licence. This product must not be used as for diagnostic or other medical purposes.

St John's Laboratory Ltd, Knowledge Dock Business Centre, University Way, London, E16 2RD | Tel: 0208 223 3081