

Anti-TLR10 antibody (380-430) (STJ503273)

STJ503273

GENERAL INFORMATION

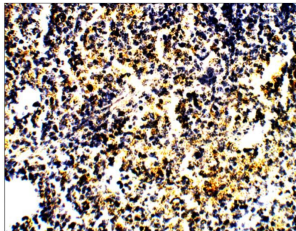
| | |
|--------------------------|--|
| Product Type | Primary antibodies |
| Short Description | Rabbit polyclonal antibody anti-TLR10 (380-430) is suitable for use in ELISA, Immunocytochemistry, Immunofluorescence, Immunohistochemistry, Immunoprecipitation and Western Blot research applications. |
| Applications | ELISA/ICC/IF/IHC/IP/WB |
| Host/Source | Rabbit |
| Reactivity | Chimpanzee/Human/Monkey/Rat |

PRODUCT PROPERTIES

| | |
|----------------------|--|
| Clonality | Polyclonal |
| Clone ID | |
| Concentration | 0.55-0.67 µg/µl |
| Conjugation | Unconjugated |
| Purification | Affinity Purified |
| Dilution | WB: 1:500 |
| Range | ELISA: 1:20, 000 IP: 1:200 IHC: 1:100 ICC: 1:100 IF: 1:100 |
| Formulation | Contains Tris, HCl/Glycine buffer pH 7.4-7.8, 30% Glycerol and 0.5% BSA, along with cryo-protective agents, Hepes, and long-term preservatives (0.02% Sodium Azide). |
| Isotype | IgG |
| Storage | Store at -20°C for long term storage. Avoid freeze-thaw cycles. |
| Instruction | |

TARGET INFORMATION

| | |
|---------------------------|--|
| Gene ID | 81793 |
| Gene Symbol | TLR10 |
| Uniprot ID | TLR10_HUMAN |
| Immunogen | Synthetic peptide taken within amino acid region 380-430 on human TLR10 protein. |
| Immunogen Region | 380-430 |
| Specificity | |
| Immunogen Sequence | |



Immunohistochemistry of rat spleen with Anti-TLR10 primary antibody (STJ503273) at 1:100 dilution in Buffer. Section was treated with DAB and Haematoxylin stain. Magnification is at 40X.

This product is suitable for in-vitro studies under the RESEARCH USE ONLY [RUO] licence. This product must not be used as for diagnostic or other medical purposes.
St John's Laboratory Ltd, Knowledge Dock Business Centre, University Way, London, E16 2RD | Tel: 0208 223 3081