

Anti-PDE2C/PDEB1 antibody (1-50) (STJ503215)

STJ503215

GENERAL INFORMATION

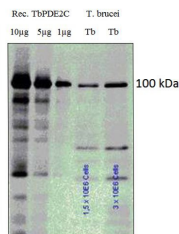
Product Type	Primary antibodies
Short Description	Rabbit polyclonal antibody anti-PDE2C/PDEB1 (1-50) is suitable for use in ELISA, Immunoprecipitation and Western Blot research applications.
Applications	ELISA/IP/WB
Host/Source	Rabbit
Reactivity	T.brucei

PRODUCT PROPERTIES

Clonality	Polyclonal
Clone ID	
Concentration	0.50 µg/µl
Conjugation	Unconjugated
Purification	Affinity Purified
Dilution Range	WB: 1:500 DB: 1:10, 000 ELISA: 1:10, 000 IP: 1:250
Formulation	Contains Tris, HCl/Glycine buffer pH 7.4-7.8, 30% Glycerol and 0.5% BSA, along with cryo-protective agents, Hepes, and long-term preservatives (0.02% Sodium Azide).
Isotype	IgG
Storage Instruction	Store at -20°C for long term storage. Avoid freeze-thaw cycles.

TARGET INFORMATION

Gene ID	
Gene Symbol	
Uniprot ID	
Immunogen	Synthetic MAP peptide taken within amino acid region 1-50 on Trypanosoma brucei class 1 phosphodiesterase PDEB1 protein.
Immunogen Region	1-50
Specificity	
Immunogen Sequence	



Western blot with Anti-PDE2C / PDEB1 Antibody (STJ503215) on recombinant TbPDE2C and cell extracts. Antibody at 1:1000 dilution in buffer.

This product is suitable for in-vitro studies under the RESEARCH USE ONLY [RUO] licence. This product must not be used as for diagnostic or other medical purposes.
St John's Laboratory Ltd, Knowledge Dock Business Centre, University Way, London, E16 2RD | Tel: 0208 223 3081