

Anti-SYDE1 antibody (680-735) (STJ503179)

STJ503179

GENERAL INFORMATION

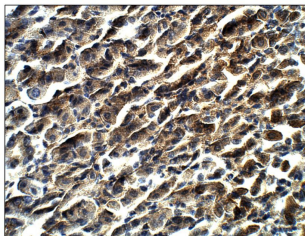
Product Type	Primary antibodies
Short Description	Rabbit polyclonal antibody anti-SYDE1 (680-735) is suitable for use in ELISA and Western Blot research applications.
Applications	ELISA/WB
Host/Source	Rabbit
Reactivity	C.elegans/Human/Mouse

PRODUCT PROPERTIES

Clonality	Polyclonal
Clone ID	
Concentration	0.67-0.68 µg/µl
Conjugation	Unconjugated
Purification	Affinity Purified
Dilution Range	WB: 1:500 ELISA: 1:10, 000 IP: 1:200 IHC: 1:50-1:150
Formulation	Contains Tris, HCl/Glycine buffer pH 7.4-7.8, 30% Glycerol and 0.5% BSA, along with cryo-protective agents, Hepes, and long-term preservatives (0.02% Sodium Azide).
Isotype	IgG
Storage Instruction	Store at -20°C for long term storage. Avoid freeze-thaw cycles.

TARGET INFORMATION

Gene ID	85360
Gene Symbol	SYDE1
Uniprot ID	SYDE1_HUMAN
Immunogen	Synthetic peptide taken within amino acid region 680-735 on human SYDE1 protein.
Immunogen Region	680-735
Specificity	
Immunogen Sequence	



Immunohistochemistry of mouse tissue with Anti-SYDE1 primary antibody (STJ503179) at 1:50 dilution in Buffer. Section was treated with DAB and Haematoxylin stain.