

Anti-Stra6 antibody (450-500) (STJ503150)

STJ503150

GENERAL INFORMATION

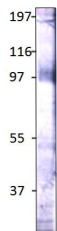
Product Type	Primary antibodies
Short Description	Rabbit polyclonal antibody anti-Stra6 (450-500) is suitable for use in ELISA, Immunoprecipitation and Western Blot research applications.
Applications	ELISA/IP/WB
Host/Source	Rabbit
Reactivity	Human/Monkey

PRODUCT PROPERTIES

Clonality	Polyclonal
Clone ID	
Concentration	0.69 µg/µl
Conjugation	Unconjugated
Purification	Affinity Purified
Dilution Range	WB: 1:500 DB: 1:10, 000 ELISA: 1:10, 000 IP: 1:200
Formulation	Contains Tris, HCl/Glycine buffer pH 7.4-7.8, 30% Glycerol and 0.5% BSA, along with cryo-protective agents, Hepes, and long-term preservatives (0.02% Sodium Azide).
Isotype	IgG
Storage	Store at -20°C for long term storage. Avoid freeze-thaw cycles.
Instruction	

TARGET INFORMATION

Gene ID	20897
Gene Symbol	Stra6
Uniprot ID	STRA6_MOUSE
Immunogen	Synthetic peptide taken within third large intra cytoplasmic loop within amino acid region 450-500 on human Stra6 protein.
Immunogen Region	450-500
Specificity	
Immunogen Sequence	



Western blot with Anti-Stra6 Antibody (STJ503150) with STRA6 peptide. Antibody at 1:500 dilution in buffer.