

Anti-Stra6 antibody (200-300) (STJ503149)

STJ503149

GENERAL INFORMATION

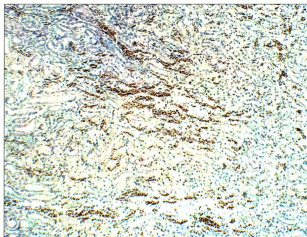
Product Type	Primary antibodies
Short Description	Rabbit polyclonal antibody anti-Stra6 (200-300) is suitable for use in ELISA, Immunohistochemistry, Immunoprecipitation and Western Blot research applications.
Applications	ELISA/IHC/IP/WB
Host/Source	Rabbit
Reactivity	Mouse/Rat

PRODUCT PROPERTIES

Clonality	Polyclonal
Clone ID	
Concentration	0.69 µg/µl
Conjugation	Unconjugated
Purification	Affinity Purified
Dilution Range	WB: 1:500 ELISA: 1:10, 000 IP: 1:200 IHC: 1:100
Formulation	Contains Tris, HCl/Glycine buffer pH 7.4-7.8, 30% Glycerol and 0.5% BSA, along with cryo-protective agents, Hepes, and long-term preservatives (0.02% Sodium Azide).
Isotype	IgG
Storage Instruction	Store at -20°C for long term storage. Avoid freeze-thaw cycles.

TARGET INFORMATION

Gene ID	20897
Gene Symbol	Stra6
Uniprot ID	STRA6_MOUSE
Immunogen	Synthetic peptide taken within third large intra cytoplasmic loop within amino acid region 200-300 on rat Stra6 protein.
Immunogen Region	200-300
Specificity	
Immunogen Sequence	



Immunohistochemistry of mouse kidney with Anti-Stra6 primary antibody (STJ503149) at 1:100 dilution in Buffer. Section was treated with DAB and Haematoxylin stain. Magnification is at 10X.

This product is suitable for in-vitro studies under the RESEARCH USE ONLY [RUO] licence. This product must not be used as for diagnostic or other medical purposes.
St John's Laboratory Ltd, Knowledge Dock Business Centre, University Way, London, E16 2RD | Tel: 0208 223 3081