

Anti-SERPINB5 antibody (310-360) (STJ503111)

STJ503111

GENERAL INFORMATION

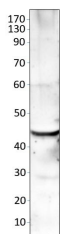
| | |
|--------------------------|--|
| Product Type | Primary antibodies |
| Short Description | Rabbit polyclonal antibody anti-SERPINB5 (310-360) is suitable for use in Confocal Microscopy, ELISA, Immunocytochemistry, Immunofluorescence, Immunohistochemistry, Immunoprecipitation and Western Blot research applications. |
| Applications | CM/ELISA/ICC/IF/IHC/IP/WB |
| Host/Source | Rabbit |
| Reactivity | Human/Mouse/Rat |

PRODUCT PROPERTIES

| | |
|----------------------------|--|
| Clonality | Polyclonal |
| Clone ID | |
| Concentration | 0.50 µg/µl |
| Conjugation | Unconjugated |
| Purification | Affinity Purified |
| Dilution Range | WB: 1:500 DB: 1:10, 000 ELISA: 1:10, 000 IP: 1:150 IHC: 1:50-1:150 IF: 1:200 |
| Formulation | Contains Tris, HCl/Glycine buffer pH 7.4-7.8, 30% Glycerol and 0.5% BSA, along with cryo-protective agents, Hepes, and long-term preservatives (0.02% Sodium Azide). |
| Isotype | IgG |
| Storage Instruction | Store at -20°C for long term storage. Avoid freeze-thaw cycles. |

TARGET INFORMATION

| | |
|---------------------------|---|
| Gene ID | 5268 |
| Gene Symbol | SERPINB5 |
| Uniprot ID | SPB5_HUMAN |
| Immunogen | Synthetic peptide taken within amino acid region 310-360 on human MASPIN protein. |
| Immunogen Region | 310-360 |
| Specificity | |
| Immunogen Sequence | |



Western blot with Anti-SERPINB5 Antibody (STJ503111) on mouse heart. Antibody at 1:500 dilution in buffer.

This product is suitable for in-vitro studies under the RESEARCH USE ONLY [RUO] licence. This product must not be used as for diagnostic or other medical purposes.

St John's Laboratory Ltd, Knowledge Dock Business Centre, University Way, London, E16 2RD | Tel: 0208 223 3081