

Anti-SLC1A2 antibody (550-574) (STJ503050)

STJ503050

GENERAL INFORMATION

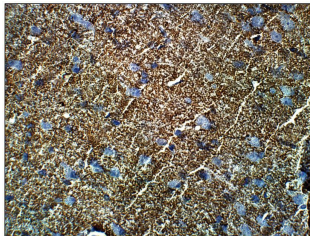
Product Type	Primary antibodies
Short Description	Rabbit polyclonal antibody anti-SLC1A2 (550-574) is suitable for use in ELISA, Immunohistochemistry, Immunoprecipitation and Western Blot research applications.
Applications	ELISA/IHC/IP/WB
Host/Source	Rabbit
Reactivity	Human/Mouse/Rat

PRODUCT PROPERTIES

Clonality	Polyclonal
Clone ID	
Concentration	0.54 µg/µl
Conjugation	Unconjugated
Purification	Affinity Purified
Dilution Range	WB: 1:500 DB: 1:10, 000 ELISA: 1:10, 000 IP: 1:200 IHC: 1:50-1:150
Formulation	Contains Tris, HCl/Glycine buffer pH 7.4-7.8, 30% Glycerol and 0.5% BSA, along with cryo-protective agents, Hepes, and long-term preservatives (0.02% Sodium Azide).
Isotype	IgG
Storage Instruction	Store at -20°C for long term storage. Avoid freeze-thaw cycles.

TARGET INFORMATION

Gene ID	6506
Gene Symbol	SLC1A2
Uniprot ID	EAA2_HUMAN
Immunogen	Synthetic peptide corresponding to C terminal amino acids 550-574 of Human EAAT2.
Immunogen Region	550-574
Specificity	Will not cross react with EAAT1 protein.
Immunogen Sequence	



Immunohistochemistry of rat Cortex with Anti-SLC1A2 primary antibody (STJ503050) at 1:100 dilution in Buffer. Section was treated with DAB and Haematoxylin stain. Magnification is at 40X.