

Anti-SIGLEC10 antibody (650-697) (STJ503026)

STJ503026

GENERAL INFORMATION

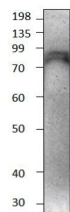
Product Type	Primary antibodies
Short Description	Rabbit polyclonal antibody anti-SIGLEC10 (650-697) is suitable for use in ELISA, Immunoprecipitation and Western Blot research applications.
Applications	ELISA/IP/WB
Host/Source	Rabbit
Reactivity	Human/Rat

PRODUCT PROPERTIES

Clonality	Polyclonal
Clone ID	
Concentration	0.56-0.60 µg/µl
Conjugation	Unconjugated
Purification	Affinity Purified
Dilution Range	WB: 1:500 ELISA: 1:10, 000 IP: 1:200
Formulation	Contains Tris, HCl/Glycine buffer pH 7.4-7.8, 30% Glycerol and 0.5% BSA, along with cryo-protective agents, Hepes, and long-term preservatives (0.02% Sodium Azide).
Isotype	IgG
Storage Instruction	Store at -20°C for long term storage. Avoid freeze-thaw cycles.

TARGET INFORMATION

Gene ID	89790
Gene Symbol	SIGLEC10
Uniprot ID	SIG10_HUMAN
Immunogen	Synthetic peptide taken within amino acid region 650-697 on human SIGLEC10 protein.
Immunogen Region	650-697
Specificity	
Immunogen Sequence	



Western blot with Anti-SIGLEC10 Antibody (STJ503026) on rat splenocytes. Antibody at 1:500 dilution in buffer.