

Anti-SHC antibody (425-474) (STJ502999)

STJ502999

GENERAL INFORMATION

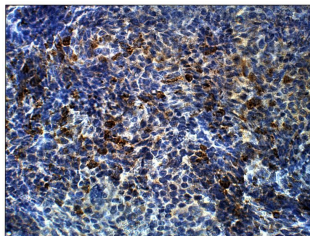
Product Type	Primary antibodies
Short Description	Rabbit polyclonal antibody anti-SHC (425-474) is suitable for use in ELISA, Immunohistochemistry, Immunoprecipitation and Western Blot research applications.
Applications	ELISA/IHC/IP/WB
Host/Source	Rabbit
Reactivity	Human/Mouse/Rat

PRODUCT PROPERTIES

Clonality	Polyclonal
Clone ID	
Concentration	0.55-0.68 µg/µl
Conjugation	Unconjugated
Purification	Affinity Purified
Dilution Range	WB: 1:500 DB: 1:10, 000 ELISA: 1:10, 000 IP: 1:200 IHC: 1:50-1:150
Formulation	Contains Tris, HCl/Glycine buffer pH 7.4-7.8, 30% Glycerol and 0.5% BSA, along with cryo-protective agents, Hepes, and long-term preservatives (0.02% Sodium Azide).
Isotype	IgG
Storage Instruction	Store at -20°C for long term storage. Avoid freeze-thaw cycles.

TARGET INFORMATION

Gene ID	20418
Gene Symbol	Shc3
Uniprot ID	SHC3_MOUSE
Immunogen	Synthetic peptide taken within amino acid region 425-474 on mouse ShcA protein.
Immunogen Region	425-474
Specificity	
Immunogen Sequence	



Immunohistochemistry with Anti-SHC Antibody (STJ502999) at 1:50 dilution in Buffer. DAB (brown) staining and Haematoxylin QS (blue) counterstain. 40X magnification. FFPE section.

This product is suitable for in-vitro studies under the RESEARCH USE ONLY [RUO] licence. This product must not be used as for diagnostic or other medical purposes.
St John's Laboratory Ltd, Knowledge Dock Business Centre, University Way, London, E16 2RD | Tel: 0208 223 3081