

Anti-SLC5A1 antibody (603-623) (STJ502988)

STJ502988

GENERAL INFORMATION

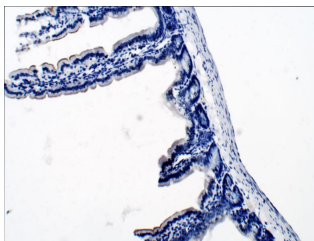
Product Type	Primary antibodies
Short Description	Rabbit polyclonal antibody anti-SLC5A1 (603-623) is suitable for use in Confocal Microscopy, ELISA, Immunocytochemistry, Immunofluorescence, Immunohistochemistry, Immunoprecipitation and Western Blot research applications.
Applications	CM/ELISA/ICC/IF/IHC/IP/WB
Host/Source	Rabbit
Reactivity	Human/Monkey/Mouse/Rat/Sheep

PRODUCT PROPERTIES

Clonality	Polyclonal
Clone ID	
Concentration	0.55 µg/µl
Conjugation	Unconjugated
Purification	Affinity Purified
Dilution Range	WB: 1:500-1:1,000 DB: 1:4,000 ELISA: 1:4,000 IP: 1:200 IHC: 1:250 ICC: 1:250 IF: 1:250 CFM: 1:250
Formulation	Contains Tris, HCl/Glycine buffer pH 7.4-7.8, 30% Glycerol and 0.5% BSA, along with cryo-protective agents, Hepes, and long-term preservatives (0.02% Sodium Azide).
Isotype	IgG
Storage Instruction	Store at -20°C for long term storage. Avoid freeze-thaw cycles.

TARGET INFORMATION

Gene ID	6523
Gene Symbol	SLC5A1
Uniprot ID	SC5A1_HUMAN
Immunogen	Synthetic peptide corresponding to amino acids 603-623 of Human SGLT1.
Immunogen Region	603-623
Specificity	
Immunogen Sequence	



Immunohistochemistry of mouse tissue with Anti-SLC5A1 primary antibody (STJ502988) at 1:50 dilution in Buffer. Section was treated with DAB and Haematoxylin stain.