

Anti-SLC5A1 antibody (402-422) (STJ502987)

STJ502987

GENERAL INFORMATION

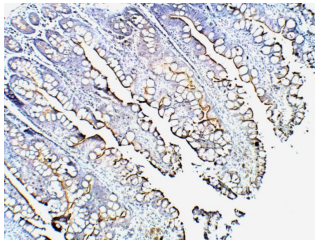
Product Type	Primary antibodies
Short Description	Rabbit polyclonal antibody anti-SLC5A1 (402-422) is suitable for use in Confocal Microscopy, ELISA, Immunocytochemistry, Immunofluorescence, Immunohistochemistry, Immunoprecipitation and Western Blot research applications.
Applications	CM/ELISA/ICC/IF/IHC/IP/WB
Host/Source	Rabbit
Reactivity	Human

PRODUCT PROPERTIES

Clonality	Polyclonal
Clone ID	
Concentration	0.6 µg/µl
Conjugation	Unconjugated
Purification	Affinity Purified
Dilution Range	WB: 1:500-1:1,000 DB: 1:4,000 ELISA: 1:4,000 IP: 1:200 IHC: 1:250 ICC: 1:250 IF: 1:250 CFM: 1:250
Formulation	Contains Tris, HCl/Glycine buffer pH 7.4-7.8, 30% Glycerol and 0.5% BSA, along with cryo-protective agents, Hepes, and long-term preservatives (0.02% Sodium Azide).
Isotype	IgG
Storage Instruction	Store at -20°C for long term storage. Avoid freeze-thaw cycles.

TARGET INFORMATION

Gene ID	6523
Gene Symbol	SLC5A1
Uniprot ID	SC5A1_HUMAN
Immunogen	Synthetic peptide corresponding to amino acids 402-422 of Human SGLT1.
Immunogen Region	402-422
Specificity	
Immunogen Sequence	



Immunohistochemistry of baboon small intestine with Anti-SLC5A1 primary antibody (STJ502987) at 1:50 dilution in Buffer. Section was treated with DAB and Haematoxylin stain. Magnification is at 10X.

This product is suitable for in-vitro studies under the RESEARCH USE ONLY [RUO] licence. This product must not be used as for diagnostic or other medical purposes.
St John's Laboratory Ltd, Knowledge Dock Business Centre, University Way, London, E16 2RD | Tel: 0208 223 3081