

## Anti-SGK1 antibody (40-90) (STJ502978)

STJ502978

### GENERAL INFORMATION

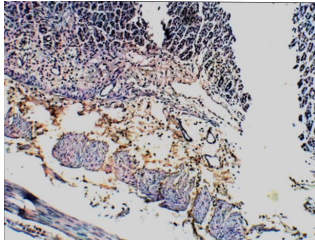
<b>Product Type</b>	Primary antibodies
<b>Short Description</b>	Chicken polyclonal antibody anti-SGK1 (40-90) is suitable for use in ELISA, Immunohistochemistry, Immunoprecipitation and Western Blot research applications.
<b>Applications</b>	ELISA/IHC/IP/WB
<b>Host/Source</b>	Chicken
<b>Reactivity</b>	Human/Rat

### PRODUCT PROPERTIES

<b>Clonality</b>	Polyclonal
<b>Clone ID</b>	
<b>Concentration</b>	0.6 µg/µl
<b>Conjugation</b>	Unconjugated
<b>Purification</b>	Affinity Purified
<b>Dilution Range</b>	WB: 1:500 DB: 1:10, 000 ELISA: 1:10, 000 IP: 1:200 IHC: 1:100
<b>Formulation</b>	Contains Tris, HCl/Glycine buffer pH 7.4-7.8, 30% Glycerol and 0.5% BSA, along with cryo-protective agents, Hepes, and long-term preservatives (0.02% Sodium Azide).
<b>Isotype</b>	IgY
<b>Storage Instruction</b>	Store at -20°C for long term storage. Avoid freeze-thaw cycles.

### TARGET INFORMATION

<b>Gene ID</b>	6446
<b>Gene Symbol</b>	SGK1
<b>Uniprot ID</b>	SGK1_HUMAN
<b>Immunogen</b>	Synthetic peptide taken within amino acid region 40-90 on human SGK1 protein.
<b>Immunogen Region</b>	40-90
<b>Specificity</b>	
<b>Immunogen Sequence</b>	



Immunohistochemistry of rat tissue with Anti-SGK1 primary antibody (STJ502978) at 1:50 dilution in Buffer. Section was treated with DAB and Haematoxylin stain. Magnification is at 10X.