

Anti-Soluble Guanylyl Cyclase beta 1 antibody (175-225) (STJ502975)

STJ502975

GENERAL INFORMATION

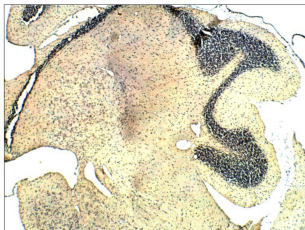
Product Type	Primary antibodies
Short Description	Rabbit polyclonal antibody anti-Soluble Guanylyl Cyclase beta 1 (175-225) is suitable for use in Confocal Microscopy, ELISA, Immunocytochemistry, Immunofluorescence, Immunohistochemistry, Immunoprecipitation and Western Blot research applications.
Applications	CM/ELISA/ICC/IF/IHC/IP/WB
Host/Source	Rabbit
Reactivity	Bovine/Human/Mouse/Pig/Rat

PRODUCT PROPERTIES

Clonality	Polyclonal
Clone ID	
Concentration	0.75-1.2 µg/µl
Conjugation	Unconjugated
Purification	Affinity Purified
Dilution Range	WB: 1:500 DB: 1:10, 000 ELISA: 1:10, 000 IP: 1:200 IHC: 1:100 ICC: 1:100 IF: 1:100 CFM: 1:100
Formulation	Contains Tris, HCl/Glycine buffer pH 7.4-7.8, 30% Glycerol and 0.5% BSA, along with cryo-protective agents, Hepes, and long-term preservatives (0.02% Sodium Azide).
Isotype	IgG
Storage Instruction	Store at -20°C for long term storage. Avoid freeze-thaw cycles.

TARGET INFORMATION

Gene ID	25202
Gene Symbol	Gucy1b1
Uniprot ID	GCYB1_RAT
Immunogen	Synthetic peptide taken within amino acid region 175-225 on rat guanylate cyclase soluble subunit beta-1 protein.
Immunogen Region	175-225
Specificity	
Immunogen Sequence	



Immunohistochemistry of rat tissue with Anti-Soluble Guanylyl Cyclase beta 1 primary antibody (STJ502975) at 1:100 dilution in Buffer. Section was treated with DAB and Haematoxylin stain. Magnification is at 5X.