

Anti-Soluble Guanylyl Cyclase alpha 2 antibody (680-730) (STJ502970)

STJ502970

GENERAL INFORMATION

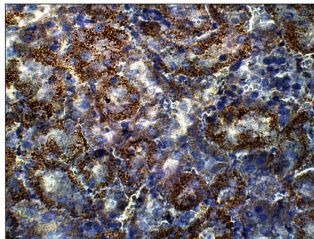
Product Type	Primary antibodies
Short Description	Rabbit polyclonal antibody anti-Soluble Guanylyl Cyclase alpha 2 (680-730) is suitable for use in ELISA, Immunohistochemistry, Immunoprecipitation and Western Blot research applications.
Applications	ELISA/IHC/IP/WB
Host/Source	Rabbit
Reactivity	Human/Mouse/Rat

PRODUCT PROPERTIES

Clonality	Polyclonal
Clone ID	
Concentration	0.7 µg/µl
Conjugation	Unconjugated
Purification	Affinity Purified
Dilution Range	WB: 1:750 ELISA: 1:10, 000 IP: 1:200 IHC: 1:50-1:150
Formulation	Contains Tris, HCl/Glycine buffer pH 7.4-7.8, 30% Glycerol and 0.5% BSA, along with cryo-protective agents, Hepes, and long-term preservatives (0.02% Sodium Azide).
Isotype	IgG
Storage Instruction	Store at -20°C for long term storage. Avoid freeze-thaw cycles.

TARGET INFORMATION

Gene ID	66012
Gene Symbol	Gucy1a2
Uniprot ID	GCYA2_RAT
Immunogen	Synthetic peptide taken within amino acid region 680-730 on rat guanylate cyclase 1, soluble, alpha 2 protein.
Immunogen Region	680-730
Specificity	
Immunogen Sequence	



Immunohistochemistry of mouse Large Intestine with Anti-Soluble Guanylyl Cyclase alpha 2 primary antibody (STJ502970) at 1:100 dilution in Buffer. Section was treated with DAB and Haematoxylin stain. Magnification is at 40X.