

Anti-SEPT4 antibody (400-450) (STJ502909)

STJ502909

GENERAL INFORMATION

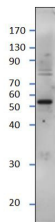
Product Type	Primary antibodies
Short Description	Rabbit polyclonal antibody anti-SEPT4 (400-450) is suitable for use in ELISA and Western Blot research applications.
Applications	ELISA/WB
Host/Source	Rabbit
Reactivity	Human/Mouse/Rat

PRODUCT PROPERTIES

Clonality	Polyclonal
Clone ID	
Concentration	0.68-075 µg/µl
Conjugation	Unconjugated
Purification	Affinity Purified
Dilution Range	WB: 1:500 DB: 1:10, 000 ELISA: 1:10, 000
Formulation	Contains Tris, HCl/Glycine buffer pH 7.4-7.8, 30% Glycerol and 0.5% BSA, along with cryo-protective agents, Hepes, and long-term preservatives (0.02% Sodium Azide).
Isotype	IgG
Storage Instruction	Store at -20°C for long term storage. Avoid freeze-thaw cycles.

TARGET INFORMATION

Gene ID	5414
Gene Symbol	SEPTIN4
Uniprot ID	SEPT4_HUMAN
Immunogen	Synthetic peptide taken within amino acid region 400-450 on SEPT4 protein.
Immunogen Region	400-450
Specificity	
Immunogen Sequence	



Western blot with Anti-SEPT4 Antibody (STJ502909) with SEPT4 peptide. Antibody at 1:500 dilution in buffer.