

Anti-SEC23A antibody (700-765) (STJ502891)

STJ502891

GENERAL INFORMATION

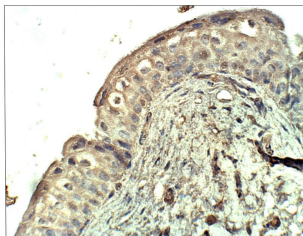
Product Type	Primary antibodies
Short Description	Rabbit polyclonal antibody anti-SEC23A (700-765) is suitable for use in ELISA, Immunohistochemistry, Immunoprecipitation and Western Blot research applications.
Applications	ELISA/IHC/IP/WB
Host/Source	Rabbit
Reactivity	D.melanogaster/Human/Monkey

PRODUCT PROPERTIES

Clonality	Polyclonal
Clone ID	
Concentration	0.65 µg/µl
Conjugation	Unconjugated
Purification	Affinity Purified
Dilution Range	WB: 1:500 DB: 1:10, 000 ELISA: 1:10, 000 IP: 1:350 IHC: 1:100
Formulation	Contains Tris, HCl/Glycine buffer pH 7.4-7.8, 30% Glycerol and 0.5% BSA, along with cryo-protective agents, Hepes, and long-term preservatives (0.02% Sodium Azide).
Isotype	IgG
Storage Instruction	Store at -20°C for long term storage. Avoid freeze-thaw cycles.

TARGET INFORMATION

Gene ID	10484
Gene Symbol	SEC23A
Uniprot ID	SC23A_HUMAN
Immunogen	Synthetic peptide taken within amino acid region 700-765 on human SEC23A protein.
Immunogen Region	700-765
Specificity	This antibody will label both SEC23A and SEC23B in human protein.
Immunogen Sequence	



Immunohistochemistry of baboon Bladder with Anti-SEC23A primary antibody (STJ502891) at 1:100 dilution in Buffer. Section was treated with DAB and Haematoxylin stain. Magnification is at 40X.