

## Anti-EDG8 antibody (380-400) (STJ502855)

STJ502855

### GENERAL INFORMATION

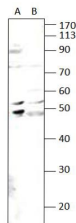
<b>Product Type</b>	Primary antibodies
<b>Short Description</b>	Rabbit polyclonal antibody anti-EDG8 (380-400) is suitable for use in ELISA and Western Blot research applications.
<b>Applications</b>	ELISA/WB
<b>Host/Source</b>	Rabbit
<b>Reactivity</b>	Human/Mouse/Rat

### PRODUCT PROPERTIES

<b>Clonality</b>	Polyclonal
<b>Clone ID</b>	
<b>Concentration</b>	0.52-0.63 µg/µl
<b>Conjugation</b>	Unconjugated
<b>Purification</b>	Affinity Purified
<b>Dilution</b>	WB: 1:500
<b>Range</b>	DB: 1:10, 000 ELISA: 1:10, 000
<b>Formulation</b>	Contains Tris, HCl/Glycine buffer pH 7.4-7.8, 30% Glycerol and 0.5% BSA, along with cryo-protective agents, Hepes, and long-term preservatives (0.02% Sodium Azide).
<b>Isotype</b>	IgG
<b>Storage Instruction</b>	Store at -20°C for long term storage. Avoid freeze-thaw cycles.

### TARGET INFORMATION

<b>Gene ID</b>	60399
<b>Gene Symbol</b>	S1pr5
<b>Uniprot ID</b>	S1PR5_RAT
<b>Immunogen</b>	Synthetic peptide taken within amino acid region 380-400 of rat S1P5R/EDG8 protein.
<b>Immunogen Region</b>	380-400
<b>Specificity</b>	Does not cross react to other Spingosine 1-phosphate receptor subtypes. Labels a strong band of EDG8 of 48-50 kDa. Also labels a 54 kDa band, the identity of this is not known but may represent phosphorylated EDG8.
<b>Immunogen Sequence</b>	



Western blot with Anti-EDG8 Antibody (STJ502855) with S1P5R (A) and T47D cells (B). Antibody at 1:500 dilution in buffer.