

Anti-RIP140 antibody (1050-2000) (STJ502791)

STJ502791

GENERAL INFORMATION

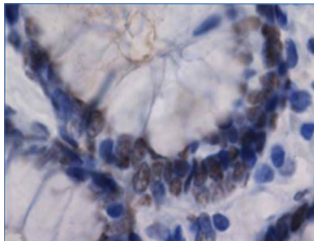
Product Type	Primary antibodies
Short Description	Rabbit polyclonal antibody anti-RIP140 (1050-2000) is suitable for use in Confocal Microscopy, ELISA, Immunocytochemistry, Immunohistochemistry, Immunofluorescence, Immunoprecipitation and Western Blot research applications.
Applications	CM/ELISA/ICC/IHC/IF/IP/WB
Host/Source	Rabbit
Reactivity	Human/Mouse/Rat

PRODUCT PROPERTIES

Clonality	Polyclonal
Clone ID	
Concentration	0.60 µg/µl
Conjugation	Unconjugated
Purification	Affinity Purified
Dilution Range	WB: 1:1, 000 DB: 1:10, 000 ELISA: 1:10, 000 IP: 1:200 IHC: 1:250 ICC: 1:250 IF: 1:250 CFM: 1:250
Formulation	Contains Tris, HCl/Glycine buffer pH 7.4-7.8, 30% Glycerol and 0.5% BSA, along with cryo-protective agents, Hepes, and long-term preservatives (0.02% Sodium Azide).
Isotype	IgG
Storage Instruction	Store at -20°C for long term storage. Avoid freeze-thaw cycles.

TARGET INFORMATION

Gene ID	268903
Gene Symbol	Nrip1
Uniprot ID	NRIP1_MOUSE
Immunogen	Synthetic peptide taken within amino acid region 1050-2000 corresponding to the C-terminal domain of RIP140.
Immunogen Region	1050-2000
Specificity	Recognizes the C-terminal domain of RIP140
Immunogen Sequence	



Immunohistochemistry of human colon with Anti-RIP140 primary antibody ChIP grade (STJ502791). Formalin/PFA-Fixed paraffin-embedded section.

This product is suitable for in-vitro studies under the RESEARCH USE ONLY [RUO] licence. This product must not be used as for diagnostic or other medical purposes.
St John's Laboratory Ltd, Knowledge Dock Business Centre, University Way, London, E16 2RD | Tel: 0208 223 3081