

Anti-Phospho-TORC2 antibody (STJ502714)

STJ502714

GENERAL INFORMATION

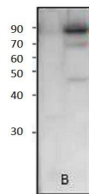
Product Type	Primary antibodies
Short Description	Rabbit polyclonal antibody anti-Phospho-TORC2 is suitable for use in ELISA, Immunoprecipitation and Western Blot research applications.
Applications	ELISA/IP/WB
Host/Source	Rabbit
Reactivity	Human/Mouse/Rat

PRODUCT PROPERTIES

Clonality	Polyclonal
Clone ID	
Concentration	0.55-0.75 µg/µl
Conjugation	Unconjugated
Purification	Affinity Purified
Dilution Range	WB: 1:500 ELISA: 1:10, 000 IP: 1:200
Formulation	Contains Tris, HCl/Glycine buffer pH 7.4-7.8, 30% Glycerol and 0.5% BSA, along with cryo-protective agents, Hepes, and long-term preservatives (0.02% Sodium Azide).
Isotype	IgG
Storage Instruction	Store at -20°C for long term storage. Avoid freeze-thaw cycles.

TARGET INFORMATION

Gene ID	200186
Gene Symbol	CRTC2
Uniprot ID	CRTC2_HUMAN
Immunogen	Phosphorylated synthetic peptide corresponding to unique amino acid sequence on TORC2 protein.
Immunogen Region	
Specificity	
Immunogen Sequence	



Western blot with Anti-Phospho-TORC2 Antibody (STJ502714) on 1) Control chondrocytes, 2) Blueberry treated chondrocytes. Antibody at 1:500 dilution in buffer.