

Anti-PSEN1 antibody (1-50) (STJ502672)

STJ502672

GENERAL INFORMATION

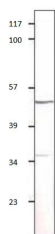
Product Type	Primary antibodies
Short Description	Rabbit polyclonal antibody anti-PSEN1 (1-50) is suitable for use in ELISA, Immunoprecipitation and Western Blot research applications.
Applications	ELISA/IP/WB
Host/Source	Rabbit
Reactivity	Bovine/Cat/Human/Monkey/Pig

PRODUCT PROPERTIES

Clonality	Polyclonal
Clone ID	
Concentration	1.00-1.25 µg/µl
Conjugation	Unconjugated
Purification	Affinity Purified
Dilution Range	WB: 1:500 DB: 1:10, 000 ELISA: 1:10, 000 IP: 1:150
Formulation	Contains Tris, HCl/Glycine buffer pH 7.4-7.8, 30% Glycerol and 0.5% BSA, along with cryo-protective agents, Hepes, and long-term preservatives (0.02% Sodium Azide).
Isotype	IgG
Storage Instruction	Store at -20°C for long term storage. Avoid freeze-thaw cycles.

TARGET INFORMATION

Gene ID	5663
Gene Symbol	PSEN1
Uniprot ID	PSN1_HUMAN
Immunogen	Synthetic peptide taken within amino acid region 1-50 on Presenilin 1 (Alzheimer disease 3) protein.
Immunogen Region	1-50
Specificity	
Immunogen Sequence	



Western blot with Anti-PSEN1 Antibody (STJ502672) with PSEN1 peptide. Antibody at 1:500 dilution in buffer.