

Anti-PREX1 antibody (815-836) (STJ502648)

STJ502648

GENERAL INFORMATION

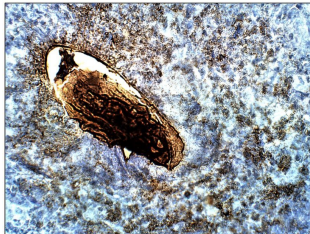
| | |
|--------------------------|---|
| Product Type | Primary antibodies |
| Short Description | Rabbit polyclonal antibody anti-PREX1 (815-836) is suitable for use in ELISA, Immunohistochemistry, Immunoprecipitation and Western Blot research applications. |
| Applications | ELISA/IHC/IP/WB |
| Host/Source | Rabbit |
| Reactivity | Human/Monkey/Mouse/Rat |

PRODUCT PROPERTIES

| | |
|----------------------------|--|
| Clonality | Polyclonal |
| Clone ID | |
| Concentration | 0.6 µg/µl |
| Conjugation | Unconjugated |
| Purification | Affinity Purified |
| Dilution Range | WB: 1:500-1:750 DB: 1:20, 000-1:50, 000 ELISA: 1:20, 000-1:50, 000 IP: 1:500 IHC: 1:50-1:150 |
| Formulation | Contains Tris, HCl/Glycine buffer pH 7.4-7.8, 30% Glycerol and 0.5% BSA, along with cryo-protective agents, Hepes, and long-term preservatives (0.02% Sodium Azide). |
| Isotype | IgG |
| Storage Instruction | Store at -20°C for long term storage. Avoid freeze-thaw cycles. |

TARGET INFORMATION

| | |
|---------------------------|---|
| Gene ID | 57580 |
| Gene Symbol | PREX1 |
| Uniprot ID | PREX1_HUMAN |
| Immunogen | Synthetic peptide corresponding to amino acid region 815-836 of Human PREX1. Peptide was covalently modified. |
| Immunogen Region | 815-836 |
| Specificity | |
| Immunogen Sequence | |



Immunohistochemistry of baboon lung with Anti-PREX1 primary antibody (STJ502648) at 1:100 dilution in Buffer. Section was treated with DAB and Haematoxylin stain. Magnification is at 40X.

This product is suitable for in-vitro studies under the RESEARCH USE ONLY [RUO] licence. This product must not be used as for diagnostic or other medical purposes.
St John's Laboratory Ltd, Knowledge Dock Business Centre, University Way, London, E16 2RD | Tel: 0208 223 3081