

Anti-Phospho-PDE5A antibody (120-170) (STJ502621)

STJ502621

GENERAL INFORMATION

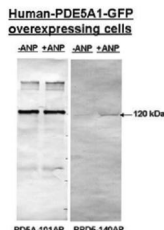
Product Type	Primary antibodies
Short Description	Rabbit polyclonal antibody anti-Phospho-PDE5A (120-170) is suitable for use in ELISA, Immunocytochemistry, Immunohistochemistry, Immunoprecipitation and Western Blot research applications.
Applications	ELISA/ICC/IHC/IP/WB
Host/Source	Rabbit
Reactivity	Bovine/Human/Mouse/Pig/Rat/Sheep

PRODUCT PROPERTIES

Clonality	Polyclonal
Clone ID	
Concentration	1.0-1.25 µg/µl
Conjugation	Unconjugated
Purification	Affinity Purified
Dilution Range	WB: 1:500 DB: 1:10, 000 ELISA: 1:10, 000 IP: 1:200 IHC: 1:100 ICC: 1:100 IF: 1:100 CFM: 1:100
Formulation	Contains Tris, HCl/Glycine buffer pH 7.4-7.8, 30% Glycerol and 0.5% BSA, along with cryo-protective agents, Hepes, and long-term preservatives (0.02% Sodium Azide).
Isotype	IgG
Storage Instruction	Store at -20°C for long term storage. Avoid freeze-thaw cycles.

TARGET INFORMATION

Gene ID	
Gene Symbol	
Uniprot ID	
Immunogen	Synthetic peptide common to all PDE5A variants taken within amino acid region 120-170 on human PDE5A protein. Phosphorylated
Immunogen Region	120-170
Specificity	This antibody will detect only PDE5A protein that has been phosphorylated at the PKG site. Will not detect unphosphorylated PDE5A, or other PDE family members.
Immunogen Sequence	



This product is suitable for in-vitro studies under the RESEARCH USE ONLY [RUO] licence. This product must not be used as for diagnostic or other medical purposes.
St John's Laboratory Ltd, Knowledge Dock Business Centre, University Way, London, E16 2RD | Tel: 0208 223 3081