

Anti-Phospho-PDE4A antibody (STJ502612)

STJ502612

GENERAL INFORMATION

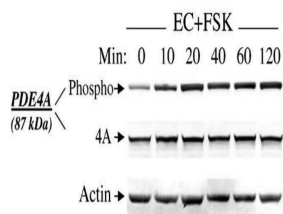
Product Type	Primary antibodies
Short Description	Rabbit polyclonal antibody anti-Phospho-PDE4A is suitable for use in ELISA, Immunoprecipitation and Western Blot research applications.
Applications	ELISA/IP/WB
Host/Source	Rabbit
Reactivity	Human/Mouse/Rat

PRODUCT PROPERTIES

Clonality	Polyclonal
Clone ID	
Concentration	0.57 µg/µl
Conjugation	Unconjugated
Purification	Affinity Purified
Dilution Range	WB: 1:500 DB: 1:10, 000 ELISA: 1:10, 000 IP: 1:150
Formulation	Contains Tris, HCl/Glycine buffer pH 7.4-7.8, 30% Glycerol and 0.5% BSA, along with cryo-protective agents, Hepes, and long-term preservatives (0.02% Sodium Azide).
Isotype	IgG
Storage Instruction	Store at -20°C for long term storage. Avoid freeze-thaw cycles.

TARGET INFORMATION

Gene ID	5141
Gene Symbol	PDE4A
Uniprot ID	PDE4A_HUMAN
Immunogen	Synthetic peptide corresponding to PKA phosphorylation site on PDE4A long form enzymes. The peptide was synthesized with phosphorylated serine residue.
Immunogen Region	
Specificity	Does not cross-react with other members of the PDE family including PDE4B or PDE4D.
Immunogen Sequence	



Western blot with Anti-Phospho-PDE4A Antibody (STJ502612) of rat pulmonary microvascular endothelial cells.

This product is suitable for in-vitro studies under the RESEARCH USE ONLY [RUO] licence. This product must not be used as for diagnostic or other medical purposes.
St John's Laboratory Ltd, Knowledge Dock Business Centre, University Way, London, E16 2RD | Tel: 0208 223 3081