

## Anti-Phospho-PDE11A antibody (100-150) (STJ502595)

STJ502595

### GENERAL INFORMATION

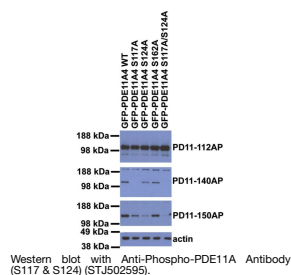
|                          |  |
|--------------------------|--|
| <b>Product Type</b>      | Primary antibodies   |
| <b>Short Description</b> | Rabbit polyclonal antibody anti-Phospho-PDE11A (100-150) is suitable for use in ELISA, Immunoprecipitation and Western Blot research applications. |
| <b>Applications</b>      | ELISA/IP/WB  |
| <b>Host/Source</b>       | Rabbit   |
| <b>Reactivity</b>        | Human/Mouse/Rat  |

### PRODUCT PROPERTIES

|                            |  |
|----------------------------|--|
| <b>Clonality</b>           | Polyclonal   |
| <b>Clone ID</b>            |  |
| <b>Concentration</b>       | 0.69 µg/µl   |
| <b>Conjugation</b>         | Unconjugated   |
| <b>Purification</b>        | Affinity Purified  |
| <b>Dilution Range</b>      | WB: 1:500<br>ELISA: 1:10,000<br>IP: 1:250  |
| <b>Formulation</b>         | Contains Tris, HCl/Glycine buffer pH 7.4-7.8, 30% Glycerol and 0.5% BSA, along with cryo-protective agents, Hepes, and long-term preservatives (0.02% Sodium Azide). |
| <b>Isotype</b>             | IgG  |
| <b>Storage Instruction</b> | Store at -20°C for long term storage. Avoid freeze-thaw cycles.  |

### TARGET INFORMATION

|                           |   |
|---------------------------|---|
| <b>Gene ID</b>            | 50940   |
| <b>Gene Symbol</b>        | PDE11A  |
| <b>Uniprot ID</b>         | PDE11_HUMAN   |
| <b>Immunogen</b>          | Synthetic peptide taken within amino acid region 100-150 on PDE11A protein. Phosphorylated Ser 117 & 124. |
| <b>Immunogen Region</b>   | 100-150   |
| <b>Specificity</b>        |   |
| <b>Immunogen Sequence</b> |   |



This product is suitable for in-vitro studies under the RESEARCH USE ONLY [RUO] licence. This product must not be used as for diagnostic or other medical purposes.  
St John's Laboratory Ltd, Knowledge Dock Business Centre, University Way, London, E16 2RD | Tel: 0208 223 3081